



NATIONAL NBT30H



EQUIPMENT SPECIFICATIONS



**WITHOUT
QUESTION**

WWW.IRVINGEQUIPMENT.COM



**WITHOUT
QUESTION**

IRVING EQUIPMENT LIMITED
1-800-561-CRANE (2726)
WWW.IRVINGEQUIPMENT.COM

CAPACITY INFO

RATED LIFTING CAPACITIES IN POUNDS WITH
STOWED EXTENSION 29FT. – 100FT. BOOM ON
OUTRIGGERS FULLY EXTENDED

| Radius in Feet | #002 | | | | | |
|---|--------------------------|------------------|------------------|------------------|------------------|------------------|
| | Main Boom Length in Feet | | | | | |
| | 29 | 44-A | 58-B | 72-C | 86-D | 100 |
| 5 | *59,200 (77.3) | | | | | |
| 8 | 43,200 (70.8) | 28,500 (77.9) | | | | |
| 10 | 36,100 (66.4) | 28,400 (75.3) | | | | |
| 12 | 32,650 (61.8) | 28,000 (72.7) | 28,150 (78) | | | |
| 15 | 27,500 (54.5) | 24,000 (68.4) | 23,050 (74.8) | 22,550 (79) | | |
| 20 | 21,150 (40.6) | 20,400 (60.9) | 18,550 (69.4) | 17,100 (74.6) | 16,000 (78.3) | 10,400 (79.9) |
| 25 | 14,900 (19.9) | 16,900 (52.7) | 16,050 (63.8) | 15,350 (70.3) | 13,400 (74.8) | 10,200 (77.3) |
| 30 | | 12,200 (43.5) | 12,750 (57.9) | 13,150 (65.8) | 11,050 (71) | 9,750 (74.4) |
| 35 | | 9,550 (32.2) | 9,650 (51.6) | 10,050 (61.1) | 10,300 (67.3) | 9,150 (71.8) |
| 40 | | 7,250 (16.3) | 7,550 (45) | 7,900 (56.6) | 8,150 (63.8) | 7,800 (68.9) |
| 45 | | | 6,050 (37) | 6,350 (51.3) | 6,600 (59.6) | 6,850 (65.6) |
| 50 | | | 4,800 (26.9) | 5,150 (45.5) | 5,350 (55.3) | 5,600 (62) |
| 55 | | | | 4,150 (39.1) | 4,400 (50.8) | 4,600 (58.2) |
| 60 | | | | 3,350 (31.7) | 3,500 (45.9) | 3,750 (54.5) |
| 65 | | | | 2,700 (22.1) | 2,850 (40.6) | 3,050 (50.5) |
| 70 | | | | | 2,300 (34.7) | 2,500 (46.3) |
| 75 | | | | | 1,800 (27.7) | 2,000 (41.8) |
| 80 | | | | | 1,400 (18.2) | 1,550 (36.8) |
| 85 | | | | | | 1,200 (31.2) |
| 90 | | | | | | 900 (24.4) |
| 95 | | | | | | 650 (14.6) |
| Minimum boom angle (°) for indicated length (no load) | | | | | | 0 |
| Maximum boom length (ft.) at 0° boom angle (no load) | | | | | | 100 |

NOTE: () Boom angles are in degrees.

#RCL operating code. Refer to RCL manual for operating instructions

*This capacity requires optional 9/16" dia. 6x25 MRC cable.

RATED LIFTING CAPACITIES IN POUNDS WITH 25 FT.-
44 FT. TELE BOOM EXTENSION ON OUTRIGGERS
FULLY EXTENDED

| Radius in Feet | 25 ft. LENGTH | 44 ft. LENGTH |
|--|-----------------|-----------------|
| | #003 | #004 |
| 35 | 4,900 (77.9) | |
| 40 | 4,500 (76.5) | |
| 45 | 4,050 (73.7) | 2,500 (75.9) |
| 50 | 3,700 (71.2) | 2,500 (74.3) |
| 55 | 3,400 (68.7) | 2,500 (72.4) |
| 60 | 3,150 (66.2) | 2,300 (70.2) |
| 65 | 3,000 (63.7) | 2,200 (68.1) |
| 70 | 2,700 (60.7) | 2,100 (66) |
| 75 | 2,250 (57.5) | 2,000 (63.8) |
| 80 | 1,800 (53.9) | 1,850 (61.3) |
| 85 | 1,350 (50.2) | 1,800 (59) |
| 90 | 1,000 (46.2) | 1,500 (56) |
| 95 | 700 (42.4) | 1,200 (52.8) |
| 100 | | 900 (49.5) |
| 105 | | 600 (46) |
| 110 | | 500 (42.8) |
| Min. boom angle for indicated length (no load) | 36° | 40° |
| Max. boom length at 0° boom angle (no load) | 72 ft. | 72 ft. |

80031508

NOTE: () Boom angles are in degrees.

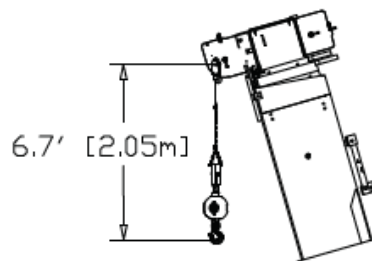
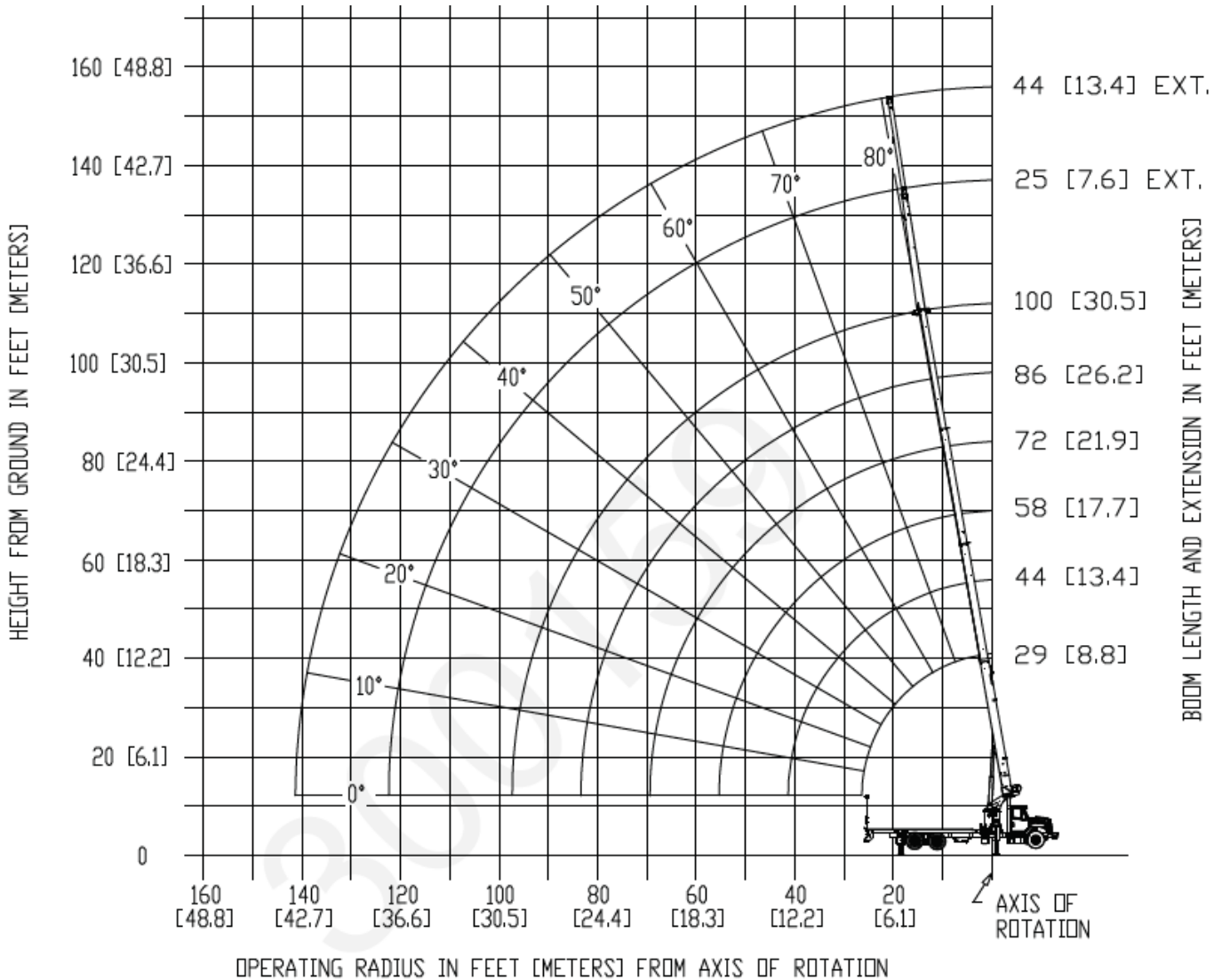
#RCL operating code. Refer to RCL manual for operating instructions.



**WITHOUT
QUESTION**

IRVING EQUIPMENT LIMITED
 1-800-561-CRANE (2726)
WWW.IRVINGEQUIPMENT.COM

RANGE INFO



DIMENSIONS ARE FOR LARGEST FURNISHED HOOK BLOCK & HEADACHE BALL, WITH ANTI-TWO BLOCK ACTIVATED.

*DRAWING IS TO SHOW THE PHYSICAL REACH OF THE MACHINE. ALWAYS REFER TO LOAD CHART TO SEE WHAT PORTIONS OF THIS RANGE ARE STRUCTURALLY AND STABILITY LIMITED.



WITHOUT QUESTION

IRVING EQUIPMENT LIMITED
 1-800-561-CRANE (2726)
WWW.IRVINGEQUIPMENT.COM

INFO

LINE PULLS AND REEVING INFORMATION

| HOISTS | CABLE SPECS. | PERMISSIBLE LINE PULLS | NOMINAL CABLE LENGTH |
|----------------|---|------------------------|----------------------|
| Main Standard | 9/16" 18x19 Class Rotation Resistant EIPS, WSC Min. Breaking Strength 38,500 lb | 7,700 lb | 390 ft. |
| *Main Optional | 9/16" 6x25 Class, IWRC Min. Breaking Strength 33,600 lb | 8,600 lb | 390 ft. |

The approximate weight of 9/16" wire rope is 0.70 lb/ft.

*Reference operator's manual for additional requirements for 60,000 lb lift.

| Parts of line | 1 | 2 | 3 | 4 | 5 | 6 | 7 |
|---|------|-------|-------|-------|-------|-------|-------|
| Max. boom length (ft.) at max. elevation with stated rigging and load block at ground level | 144 | 100 | 75 | 60 | 50 | 43 | 36 |
| Low speed lift (lb) | 7700 | 15400 | 23100 | 30800 | 38500 | 46200 | 53900 |
| High speed lift (lb) | 3000 | 6000 | 9000 | 12000 | 15000 | 18000 | 21000 |

HOIST PERFORMANCE

| Wire Rope Layer | Hoist Line Pulls | | Drum Rope Capacity (ft.) | |
|-----------------|------------------|---------------|--------------------------|-------|
| | Two Speed Hoist | | | |
| | Low | High | Layer | Total |
| | Available lb* | Available lb* | | |
| 1 | 10,609 | 5,305 | 65 | 65 |
| 2 | 9,566 | 4,783 | 72 | 137 |
| 3 | 8,709 | 4,355 | 79 | 216 |
| 4 | 7,993 | 3,997 | 86 | 302 |
| 5 | 7,386 | 3,693 | 93 | 395 |

*Max. lifting capacity: 18x19 class = 7,700 lb

- ✓ FULL-SERVICE PROVIDER FOR CRANE RENTAL, RIGGING, AND LIFT PLANNING.
- ✓ DAILY, WEEKLY, MONTHLY RATES AVAILABLE
- ✓ DRY-LEASE AND LONG-TERM RENTALS
- ✓ OUR PURPOSE IS TO LEAVE 'NO ROOM FOR DOUBT'!