



# MANITOWOC 999 – 275T



## EQUIPMENT SPECIFICATIONS



**WITHOUT  
QUESTION**

[WWW.IRVINGEQUIPMENT.COM](http://WWW.IRVINGEQUIPMENT.COM)



# WITHOUT QUESTION

**IRVING EQUIPMENT LIMITED**  
1-800-561-CRANE (2726)  
[WWW.IRVINGEQUIPMENT.COM](http://WWW.IRVINGEQUIPMENT.COM)

## INFO

### IDENTIFICATION

Asset Number	CR263
Crane Make	Manitowoc
Crane Model	999
Type	275T Crawler
Serial Number	9991179

### DIMENSIONS

Overall length crawlers	28'3
Overall width of crawlers	23'2
Crawler pad width	4'
Gantry Height	43'8"
Tailswing radius	19'4"

### TRANSPORT / ASSEMBLY

Transport loads (300' main+80' jib)	12
Transportation, heaviest load	87,500lbs
Self-erect capable	

### OPERATOR FEATURES

Insulated operator's cab w/Air Cond
Hydraulic shaft drivetrain
FACT boom connections
Manitowoc EPIC control system
Rated capacity limiter & cutouts

### AVAILABLE EQUIPMENT

Crane counterweight, (SERIES 3)	219,600lb
Carbody ballast weight	80,000lb
Fixed jib, offset angles	5°, 15°, 25°
Main (HL) boom max. length	290'
Luffing jib, max length	200'
Fixed Jib	80'

### ONBOARD EQUIPMENT

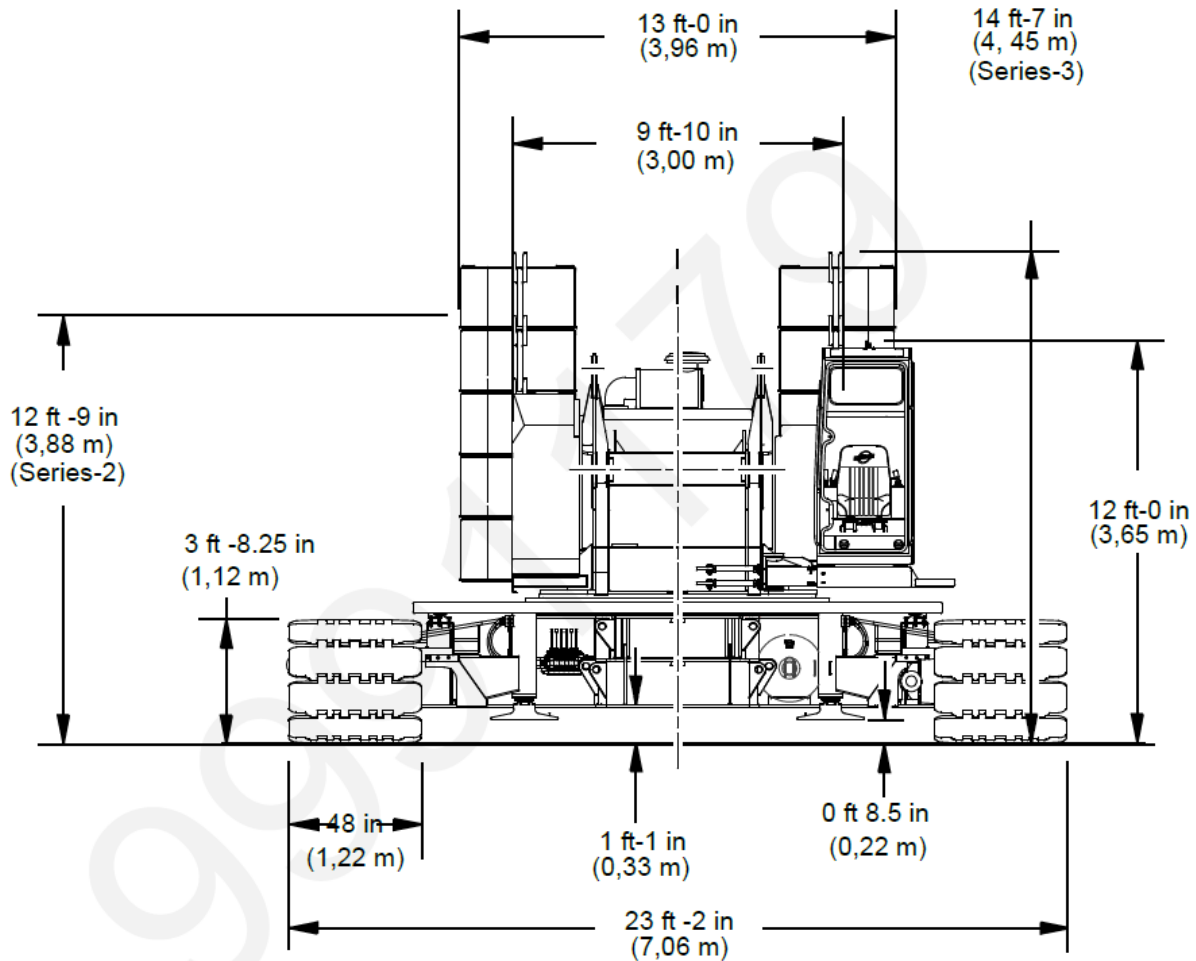
Hoist Winches	Main & Auxiliary
Main Drum Capacity	1,727' of 1" dia.
Line Pull (max)	29,500lb
Line Speed, Layer 1	285ft/min
Line Speed, Layer 7	440ft/min
Rooster sheave boom point ext.	8'8"



**WITHOUT  
QUESTION**

**IRVING EQUIPMENT LIMITED**  
1-800-561-CRANE (2726)  
[WWW.IRVINGEQUIPMENT.COM](http://WWW.IRVINGEQUIPMENT.COM)

## DIMENSIONS





**WITHOUT  
QUESTION**

**IRVING EQUIPMENT LIMITED**  
1-800-561-CRANE (2726)  
[WWW.IRVINGEQUIPMENT.COM](http://WWW.IRVINGEQUIPMENT.COM)

## DIMENSIONS

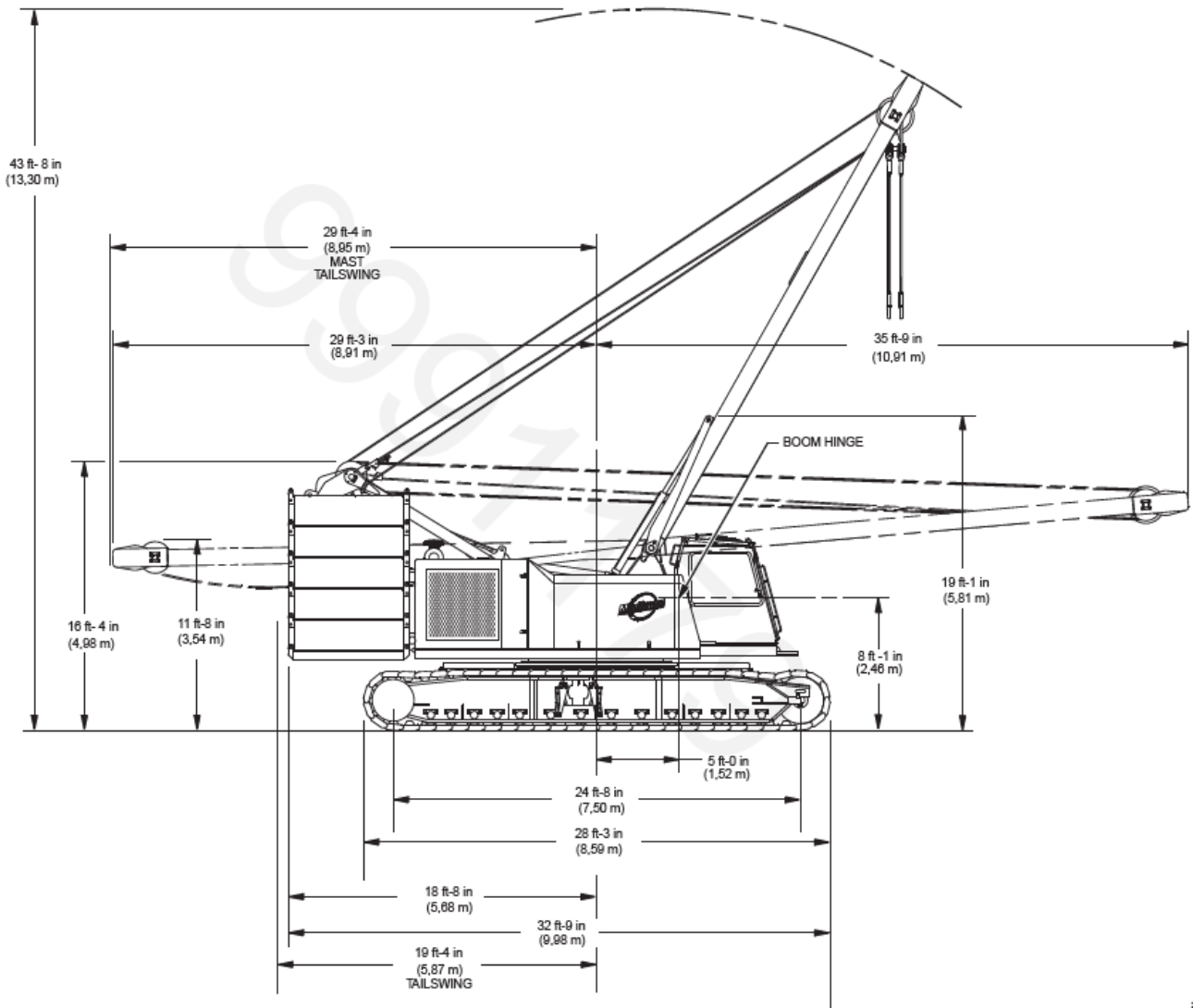


FIGURE 1-





# WITHOUT QUESTION

**IRVING EQUIPMENT LIMITED**  
1-800-561-CRANE (2726)  
**WWW.IRVINGEQUIPMENT.COM**

## SPECIFICATIONS

### Upperworks



#### Engine

Cummins Model QSM11 diesel, 6 cylinder, 280 kW (375 BHP) @ 2100 governed RPM.

Caterpillar Model 3176 diesel, 6 cylinder, 291 kW (390 BHP) @ 2100 governed RPM.

Includes engine block heater (120 V), ether starting aid, manually operated disconnect clutch for cold weather starting, high silencing muffler, hydraulic oil cooler, radiator and fan.

Multiple hydraulic pump drive transmission provides independent power for all machine functions.

Two 12 volt maintenance-free, Group 8D batteries, 1400 CCA at -18°C (0° F), 24 volt starting and 120 amp alternator.

Optional: consult factory for other available engines.

One 644 l (170 gal) capacity diesel fuel tank, mounted on rear of upperworks, with level indicator in operator's cab.



#### Controls

Modulating electronic-over-hydraulic controls provide infinite speed response directly proportional to control lever movement. Controls include Manitowoc's exclusive EPIC® *Electronically Processed Independent Control* system providing microprocessor driven control logic, pump control, on-board diagnostics, and service information.

Block-up limit control is standard for hoist and whip lines.

Integrated Load Moment Indicator system (LMI) is standard for main boom and upper boom point. "Function cut-out" or "warning only" operation is available via a keyed switch on the LMI console.

Optional travel and swing alarms are available.

Optional foot controls for travel.



#### Hydraulic System

Six high-pressure piston pumps are driven through a multi-hydraulic pump transmission. These six pumps provide independent "closed loop" hydraulic power for front drum, rear drum, boom hoist system, swing system, and both left and right crawler operation.

System	kg/cm <sup>2</sup> (psi)	lpm (gpm)
Front Drum	422 (6,000)	379 (100)
Rear Drum	422 (6,000)	379 (100)
Boom Hoist	422 (6,000)	227 (60)
Swing System	386 (5,500)	227 (60)
Left Crawler	422 (6,000)	227 (60)
Right Crawler	422 (6,000)	227 (60)
Auxiliary Pump*	422 (6,000)	379 (100)

\*Optional pump powers auxiliary drum on liftcrane or main hoisting drum on RINGER® attachment.

Hydraulic reservoir capacity is 454 l (120 gal) and is equipped with breather, dipstick, clean out access, and internal diffuser.

Each function is equipped with relief valves to protect the hydraulic circuit from overload or shock.

Replaceable, spin on ten micron (absolute) full flow line filter is furnished in the hydraulic circuit. All oil is filtered prior to return to the hydraulic reservoir.

Hydraulic system also includes pump transmission disconnect clutch & hydraulic oil cooler.



#### Drums

Two equal width winches 940 mm (37") wide and 540 mm (21-1/4") diameter are driven by independent variable displacement axial piston hydraulic motors through planetary reduction mounted on separate front and rear shafts with anti-friction bearings. Drums are grooved for 26 mm rope.

Powered hoisting/lowering operation is standard with automatic (spring applied, hydraulically released) multi-disc brakes, and drum rotation indicators.

Optional free-fall operation for front and/or rear drum(s). Wet disk brake manually applied by foot pedal with locking latch in operator's cab. Operator may select free-fall or powered lowering mode using a selector switch.

Optional auxiliary (third) hydraulic powered drum rated at 89,0 kN (20,000 lb) line pull mounted in boom butt. Includes third drum control system.

Optional auxiliary drum preparation includes electric wiring, controls, hydraulic pump and plumbing.

Optional bolt-on clamshell/dragline laggings.

Optional wire rope for various applications.



# WITHOUT QUESTION

**IRVING EQUIPMENT LIMITED**  
 1-800-561-CRANE (2726)  
**WWW.IRVINGEQUIPMENT.COM**

## SPECIFICATIONS

4

### **Boom Hoist**

Independent boom hoist consists of a 343 mm (13-1/2") wide and 483 mm (19") diameter drum grooved for 22,23 mm (7/8") diameter wire rope. Includes 323,1 m (1,060') of 22,23 mm (7/8") diameter wire rope for 20 part line reeving.

Drum is powered by a fixed displacement hydraulic motor coupled to an internal brake and planetary gearbox equipped with ratcheting pawl.

Boom hoist speed: raise 88,4 m (290') full main boom from 0° - 82° in 2 minutes, 50 seconds.

### **Mast and Gantry**

Moving mast is 9,8 m (32') long and connects the boom hoist reeving to the steel boom suspension strap rigging. When used with optional self-erect package, the mast is utilized for crane assembly and disassembly. It is capable of lifting and positioning the crawler assemblies, stacking the counterweights, and assembling the boom and jib.

Gantry includes gantry raising cylinders capable of lifting the entire upperworks counterweight for removal and installation. Counterweight attaches to rotating bed with power actuated pins.

Air cushioned boom stop and automatic boom stop standard.

### **Counterweight**

QTY.	ITEM	UNIT WEIGHT		TOTAL WEIGHT	
		kg	lb	kg	lb
1	Upperworks Tray	9 572	21,100	9 572	21,100
1	Center Box	10 660	23,500	10 660	23,500
6	Upper Side Box	7 938	17,500	47 628	105,000
		<b>SERIES 1 TOTAL</b>		<b>67 860</b>	<b>149,600</b>
2	Upperworks Upper Side Box	7 938	17,500	15 876	35,000
2	Carbody Lower Box	9 978	22,000	19 956	44,000
		<b>Optional: Add to SERIES 1 for SERIES 2 TOTAL</b>		<b>103 690</b>	<b>228,600</b>
2	Upperworks Upper Side Box	7 938	17,500	15 876	35,000
2	Carbody Upper Box	8 165	18,000	16 330	36,000
		<b>Optional: Add to SERIES 2 for SERIES 3 TOTAL</b>		<b>135 896</b>	<b>299,600</b>

Includes connecting pins, brackets, and stops.

Optional low-profile counterweight boxes for Series 3 only. Consists of twelve 6 622 kg (14,600 lb) upper side counterweight boxes in lieu of the standard ten 7 938 kg (17,500 lb) counterweight boxes. Low profile boxes allow

greater versatility for transport of boom and counterweight sections where specific markets have transport restrictions.

### **Swing System**

High strength fabricated steel alloy rotating bed is mounted on 2,76 m (108-9/16") diameter turntable triple-row ball bearing.

Independent swing powered by a fixed displacement hydraulic motor coupled to a planetary gearbox with internal brake. 360° positive swing lock.

Swing system maximum speed: 1.8 rpm.

### **Operator's Cab**

Fully enclosed and insulated steel module located on a pivoting mount at the left front corner of rotating bed, allowing module repositioning for transportation. Module is equipped with sliding door, large safety glass windows on all sides and roof. Signal horn, cab space heater, front and roof windshield wipers, dome light, sun visor and shade, fire extinguisher and air circulating fan are standard.

- Optional air conditioner.
- Optional nylon protective window covers.

## Lowerworks

### **Carbody**

Connects rotating bed to crawler assemblies. High strength fabricated steel assembly with FACT™ connection system for fast installation and removal of crawler assemblies.

### **Crawlers**

Crawler assemblies are 8,59 m (28' 3") long with 1,22 m (48") wide cast steel crawler pads and sealed "low maintenance" intermediate rollers. Each crawler is identical and can be mounted on either side of the carbody. Each crawler is powered independently by a variable displacement hydraulic motor and includes two hydraulically powered pin actuators for fast installation and removal from carbody. Carbody mounted drive motors are connected to crawler final reduction via telescoping shafts. This permits crawlers to be removed without opening their hydraulic circuits. Crawlers provide



# WITHOUT QUESTION

**IRVING EQUIPMENT LIMITED**  
1-800-561-CRANE (2726)  
**WWW.IRVINGEQUIPMENT.COM**

## SPECIFICATIONS

ample tractive effort that allows counter rotation with full rated load. Maximum ground speed of 1,61 kph (1.0 mph).

Optional Self-Erect system includes: carbody jacking cylinders with pads, controls, 41 mton (45 ton) assembly block, boom-butt installation support, and crawler handling chains.

### Attachments



#### No. 82 Heavy-Lift Main Boom

The liftcrane is equipped with a 21,3 m (70') No. 82 basic heavy-lift angle chord boom consisting of a 9,1 m (30') butt and 12,2 m (40') top with eight 76,2 cm (30") diameter roller bearing sheaves on one shaft. Includes rope guides, boom hoist wire rope, and boom angle indicator. The No. 82 boom utilizes steel suspension straps and Manitowoc's patented, exclusive FACT™ connection system. The FACT connection system consists of two vertical pins, two horizontal connection pins and alignment pads for each boom connection location.

Powered boom hinge system including cylinder, piping, operating controls and locking device standard.

Luffing jib preparation included as standard.

Optional 3,0 m (10'), 6,1 m (20'), and 12,2 m (40') No. 82 boom inserts with steel boom suspension straps, and FACT™ connection system.

Optional No. 82 or No. 22EL detachable upper boom point with one 76,2 cm (30") diameter tapered roller bearing steel sheave grooved for 26 mm or (1") rope with rope guard for liftcrane.

Optional No. 22EL basic heavy-lift boom similar to No. 82 described above, but with pinned boom connections and boom suspension pendants in lieu of FACT™ boom connection system and steel boom suspension straps.

Optional 3,0 m (10'), 6,1 m (20'), and 12,2 m (40') No. 22 boom inserts with pinned boom connections and boom suspension pendants.

Optional 12,2 m (40') No. 22C open throat top with six 76,2 cm (30") diameter straight roller bearing sheaves on one shaft and boom suspension pendants. Used with No. 22E boom butt and inserts.

Optional 15,2 m (50') No. 22E light tapered top and 9,1 m (30') tapered insert with pinned boom connections and boom suspension pendants. Used with No. 22E boom butt and inserts.



#### No. 82 Long Reach Boom Top

Optional 15,2 m (50') No. 82 basic long reach boom top with four 76,2 cm (30") diameter straight roller bearing sheaves. Includes rope guides, steel boom suspension straps, and FACT™ connection system. Utilizes existing 9,1 m (30') butt and No. 82 boom inserts for lengths up to 103,6 m (340'). Requires one 12,2 m (40') light weight boom insert for lengths equal to or greater than 94,4 m (310').



#### No. 134 Fixed Jib

Optional No. 134 basic fixed jib 9,1 m (30') length consisting of 4,6 m (15') jib butt and 4,6 m (15') jib top with 3,7 m (12') jib strut, pendants and backstay. Includes LMI hardware. For use with booms No. 82, No. 82LR, or No. 22EL, or as a fixed jib extension on No. 149 luffing jib.

Optional No. 134 fixed jib inserts 3,0 m (10') and 6,1 m (20') with pendants.

Utilize fixed jib inserts in combination with the No. 134 basic fixed jib for total lengths up to 24,4 m (80').

Note: Jib lengths greater than 18,3 m (60') require the use of at least one 6,1 m (20') No. 134 fixed jib insert.



#### No. 123 Fixed Jib

Optional No. 123 basic fixed jib 9,1 m (30') length consisting of 4,6 m (15') jib butt and 4,6 m (15') jib top with 3,7 m (12') jib strut, pendants and backstay. For use with No. 82LR boom top, No. 22C open throat top or No. 22E light tapered top.

Optional No. 123 fixed jib inserts 3,0 m (10') and 6,1 m (20') with pendants.

Utilize fixed jib inserts in combination with the No. 123 basic fixed jib for total lengths up to 18,3 m (60').



#### No. 149 Luffing Jib

Optional 21,3 m (70') basic No. 149 luffing jib assembly with LMI hardware consisting of 7,6 m (25') butt, 6,1 m (20') insert and 7,6 m (25') top with three 68,6 cm (27") straight roller bearing sheaves and pin connected jib sections, steel jib suspension straps, fixed strut, jib strut, backstay straps, jib point wheel, 26 mm luffing jib hoist line, and FACT™ connection system. Used only with No. 82 heavy-lift boom.







# WITHOUT QUESTION

IRVING EQUIPMENT LIMITED  
1-800-561-CRANE (2726)  
WWW.IRVINGEQUIPMENT.COM

## SPECIFICATIONS

6

Optional 3,0 m (10'), 6,1 m (20'), and 12,2 m (40') No. 149 inserts with steel jib suspension straps. Utilize luffing jib inserts in combination with the No. 149 basic luffing jib for total lengths up to 73,2 m (240').

Optional 6,1 m (20') insert with sheaves and guides for intermediate fall that provides up to two-part load line at intermediate position in luffing jib. Use of insert may require intermediate luffing jib suspension.

Can be assembled in the air.

Note: Only one 3,0 m (10') insert is allowed in the luffing jib.



### No. 135 Luffing Jib

Optional 21,3 m (70') basic No. 135 luffing jib assembly with LMI hardware consisting of 8,2 m (27') butt, 6,1 m (20') insert, and 7,0 m (23') top with two 68,6 cm (27") straight roller bearing sheaves and pin connected jib sections, pendants, fixed strut, jib strut, backstay pendants, boom point wheel, 26 mm luffing jib hoist line. For use with No. 82 or No. 22EL boom.

Optional 3,0 m (10'), 6,1 m (20'), and 12,2 m (40') No. 135 inserts with pendants. Utilize luffing jib inserts in combination with the No. 135 basic luffing jib for total lengths up to 57,8 m (170').

Optional luffing jib fold-under erection equipment includes wire rope guide and manual pin release parts to allow jib to fold under.

Note: Only one 3,0 m (10') insert is allowed in the luffing jib.

Note: 7 m (23') top, inserts, and pendants for inserts from No. 23 boom can be used as part of No. 135 luffing jib. No. 23 boom top requires modifications.



### No. 138 Fixed Jib Extension

Optional 9,1 m (30') basic fixed jib extension includes jib stop, backstay, wheel, and mounting parts for use on No. 135 luffing jib.

Optional No. 138 3,0 m (10') inserts with pendants. Utilize fixed jib inserts in combination with the No. 138 basic fixed jib extension for total lengths up to 18,3 m (60').

Note: 4,6 m (15') top, 3,0 m (10') inserts, pendants for inserts, and 5,5 m (18') strut from No. 124 fixed jib can be used as part of No. 138 fixed jib extension. No. 124 jib top requires modifications.

### Optional Equipment

Optional Blocks and Hooks –

13,6 mton (15 ton) swivel hook and weight ball.

41 mton (45 ton) hook block with one 76,2 cm (30") sheave for 26 mm or (1") wire rope with swivel hook, hook latch, and swivel lock (assembly block).

54 mton (60 ton) hook block with two 76,2 cm (30") sheaves for 26 mm or (1") wire rope with swivel hook, hook latch, and swivel lock.

91 mton (100 ton) hook block with three 76,2 cm (30") sheaves for 26 mm or (1") wire rope with swivel hook, hook latch, and swivel lock.

181,4 mton (200 ton) hook block with six 76,2 cm (30") sheaves for 26 mm or (1") wire rope with swivel hook, hook latch, and swivel lock.

Upper block single sheave to be added to 181,4 mton (200 ton) load block for upgrade to 208,6 mton (230 ton) capacity.

200 mton (220 ton) hook block with seven 76,2 cm (30") sheaves for 26 mm or (1") wire rope with swivel hook, hook latch, and swivel lock.

227 mton (250 ton) hook block with eight 76,2 cm (30") sheaves for 26 mm or (1") wire rope with swivel hook, hook latch, and swivel lock.

Optional Hydraulic Test Kit: required to properly analyze the performance of the EPIC® control system.

Optional Service Interval Kits: for the regularly scheduled maintenance of general crane operations.

Optional Lighting Packages: consult Factory for available options.

Optional Special Paint: in color(s) other than Manitowoc standard red and black.

Optional Special Customer Decals: custom vinyl decal(s) of name and/or logo from artwork supplied by customer.

Optional Export Packaging: basic crane, boom and jib sections.

model 999









# WITHOUT QUESTION

**IRVING EQUIPMENT LIMITED**  
 1-800-561-CRANE (2726)  
**WWW.IRVINGEQUIPMENT.COM**

## HEAVY LIFT BOOM LOAD CHART (SAMPLE ONLY)

### Liftcrane Boom Capacities - Series 3

#### Boom No. 82 or No. 22EL

99 609 kg (219,600 lb) Upperworks Counterweight 36 288 kg (80,000 lb) Carbody Counterweight

360° Rating

kg (lb) x 1 000

Boom m (ft)	21,3 (70)	27,4 (90)	33,5 (110)	39,6 (130)	45,7 (150)	51,8 (170)	57,9 (190)	64,0 (210)	70,1 (230)	76,2 (250)	82,3 (270)	88,4 (290)	
Radius													
4,6 (15)	250,0* (551.0)*												
5,0 (17)	219,9 (462.5)												
6,0 (20)	183,0 (397.5)	180,7 (396.4)											
8,0 (26)	139,0 (309.3)	138,5 (308.3)	138,1 (307.5)	133,2 (295.0)	120,1 (265.5)								
10,0 (32)	111,5 (252.2)	111,1 (251.2)	110,8 (250.5)	110,5 (249.9)	110,6 (248.9)	100,8 (224.1)	88,6 (196.8)						
11,0 (36)	100,2 (221.8)	100,3 (222.0)	100,4 (222.1)	100,3 (221.9)	99,9 (221.0)	97,6 (215.7)	86,3 (190.5)	76,7 (169.2)	63,1 (139.3)				
12,0 (40)	88,2 (190.3)	88,3 (190.4)	88,3 (190.4)	88,3 (190.4)	88,2 (190.0)	88,3 (189.7)	81,4 (177.0)	74,9 (164.5)	62,8 (138.4)	51,8 (114.1)	-	(95.1)	
14,0 (46)	70,9 (156.1)	70,9 (156.2)	70,9 (156.1)	70,9 (156.0)	70,6 (155.5)	70,5 (155.1)	70,3 (154.6)	67,9 (149.6)	62,1 (137.1)	51,2 (113.0)	42,6 (94.1)	35,3 (77.9)	
15,0 (50)	64,4 (139.0)	64,4 (139.0)	64,4 (138.9)	64,3 (138.8)	64,1 (138.3)	63,9 (137.9)	63,6 (137.3)	63,6 (136.7)	60,7 (132.5)	50,9 (112.2)	42,3 (93.3)	35,0 (77.2)	
18,0 (60)	50,1 (108.2)	50,1 (108.1)	50,0 (108.0)	49,9 (107.8)	49,6 (107.2)	49,5 (106.8)	49,1 (106.1)	48,9 (105.5)	48,6 (104.7)	48,2 (104.7)	41,5 (91.4)	34,3 (75.5)	
24,0 (80)		33,6 (72.6)	33,6 (72.5)	33,5 (72.3)	33,2 (71.7)	33,0 (71.2)	32,6 (70.4)	32,3 (69.8)	31,9 (68.9)	31,9 (68.9)	31,5 (68.0)	31,3 (67.2)	
30,0 (100)			24,4 (52.7)	24,3 (52.5)	24,1 (51.9)	23,8 (51.4)	23,5 (50.6)	23,1 (49.9)	22,7 (49.0)	22,7 (48.9)	22,3 (48.0)	21,9 (47.2)	
34,0 (110)			-	20,2 (41.6)	19,9 (45.6)	19,9 (45.0)	19,7 (44.4)	19,3 (43.6)	19,0 (42.9)	18,6 (42.0)	18,6 (42.0)	18,1 (41.0)	17,7 (40.2)
36,0 (120)				18,5 (39.8)	18,2 (39.2)	18,0 (38.7)	17,6 (37.9)	17,3 (37.2)	16,9 (36.3)	16,8 (36.2)	16,4 (35.3)	16,0 (34.5)	
40,0 (130)				-	15,3 (30.9)	15,3 (34.5)	15,1 (34.0)	14,8 (33.2)	14,4 (32.4)	14,0 (31.6)	14,0 (31.5)	13,5 (30.5)	13,2 (29.7)
42,0 (140)					13,9 (29.3)	13,9 (29.9)	13,5 (29.1)	13,2 (28.4)	12,8 (27.5)	12,8 (27.4)	12,3 (26.5)	12,0 (25.6)	
46,0 (150)					-	11,7 (22.4)	11,7 (26.4)	11,5 (25.7)	11,1 (24.9)	10,7 (24.0)	10,7 (24.0)	10,2 (23.0)	9,8 (22.1)
50,0 (160)						8,7 (21.4)	9,7 (22.6)	9,4 (21.9)	9,0 (21.0)	8,9 (20.9)	8,5 (20.0)	8,1 (19.1)	
52,0 (170)							8,5 (19.1)	8,6 (19.3)	8,2 (18.4)	8,2 (18.3)	7,8 (17.4)	7,4 (16.5)	
58,0 (190)								5,8 (13.0)	6,1 (13.6)	6,2 (13.9)	5,8 (12.9)	5,4 (12.1)	
64,0 (210)									3,4 (7.6)	4,1 (9.1)	3,9 (8.8)	3,8 (8.5)	
70,0 (230)										1,8 (4.1)	1,9 (4.2)	1,8 (4.0)	

\*NOTE: Special equipment required.

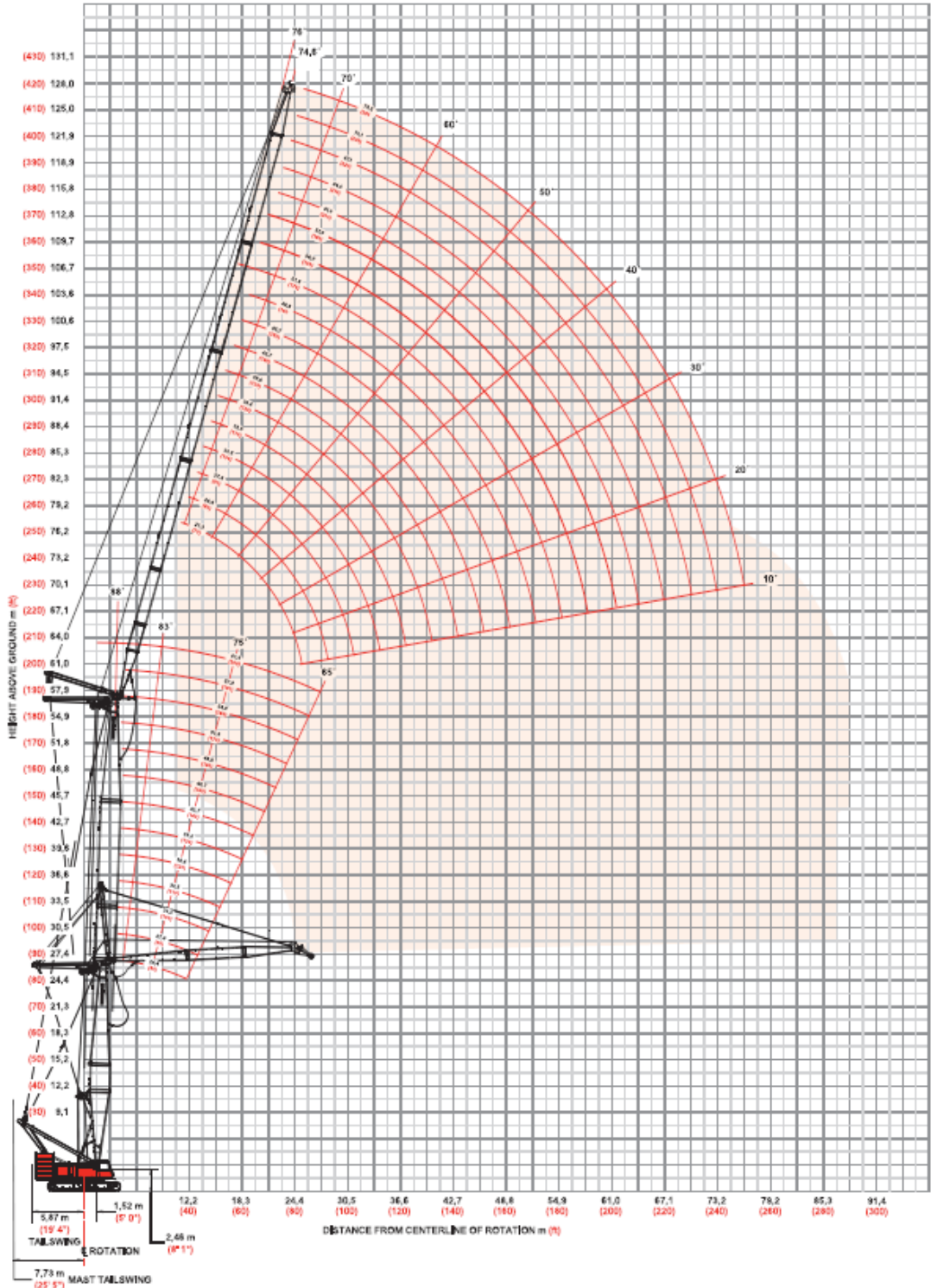


**WITHOUT  
QUESTION**

**IRVING EQUIPMENT LIMITED**  
 1-800-561-CRANE (2726)  
**WWW.IRVINGEQUIPMENT.COM**

**LUFFING JIB RANGE DIAGRAM**

**No. 135 Luffing Jib on No. 82 or No. 22EL Main Boom**







# WITHOUT QUESTION

**IRVING EQUIPMENT LIMITED**  
 1-800-561-CRANE (2726)  
**WWW.IRVINGEQUIPMENT.COM**

## LUFFING JIB LOAD CHARTS (SAMPLE ONLY)

64

### Liftcrane Luffing Jib Capacities - Series 3

#### Luffing Jib No. 135 on Boom No. 82 or No. 22EL

99 609 kg (219,600 lb) Upperworks Counterweight 36 288 kg (80,000 lb) Carbody Counterweight

360° Rating

kg (lb) x 1 000

88° Boom Angle

Boom m (ft)	21,3 (70)	30,5 (100)	42,7 (140)	51,8 (170)	61,0 (200)
<b>Luffing Jib Length 21,3 m (70 ft)</b>					
Radius					
12,2 (40)	46,1 (101.8)				
14,0 (45)	43,5 (96.7)	43,7 (96.9)	44,1 (98.0)		
16,0 (50)	41,7 (93.8)	41,8 (94.1)	41,7 (93.9)	39,8 (89.4)	35,3 (80.2)
18,0 (60)	38,7 (84.3)	39,6 (86.9)	39,7 (87.1)	38,0 (83.3)	32,6 (71.1)
22,0 (70)	28,7 (68.3)	30,8 (71.6)	31,8 (73.5)	31,0 (71.1)	27,7 (62.7)
24,0 (80)		23,7 (47.6)	25,4 (51.8)	26,3 (55.1)	25,6 (55.7)
26,0 (90)					
28,0 (100)					
30,0 (105)					
32,0 (110)					

Boom m (ft)	21,3 (70)	30,5 (100)	42,7 (140)	51,8 (170)	61,0 (200)
<b>Luffing Jib Length 30,5 m (100 ft)</b>					
Radius					
12,2 (40)	35,3 (77.9)	35,1 (77.6)			
14,0 (45)	33,8 (75.3)	33,8 (75.1)	33,3 (74.2)	31,9 (70.7)	
16,0 (50)	31,7 (71.7)	31,7 (71.6)	31,5 (71.0)	31,1 (69.8)	25,1 (55.9)
18,0 (60)	29,8 (65.2)	29,9 (65.4)	29,8 (65.2)	29,4 (64.5)	24,4 (53.8)
22,0 (70)	26,5 (59.6)	26,6 (59.9)	26,7 (60.1)	26,6 (59.8)	23,2 (51.9)
24,0 (80)	25,1 (54.9)	25,3 (55.3)	25,4 (55.7)	25,2 (55.1)	21,8 (47.5)
26,0 (90)	23,8 (49.2)	24,1 (48.1)	24,3 (51.9)	23,4 (48.6)	20,3 (42.7)
28,0 (100)	21,7 (42.3)	22,8 (44.9)	23,1 (45.7)	21,5 (43.0)	18,9 (38.4)
30,0 (105)	19,6 (35.4)	20,8 (41.9)	21,2 (42.8)	19,8 (40.5)	17,7 (36.6)
32,0 (110)	16,0 (-)	19,0 (33.0)	19,4 (35.6)	18,3 (38.2)	16,6 (35.2)

Boom m (ft)	21,3 (70)	30,5 (100)	42,7 (140)	51,8 (170)	61,0 (200)
<b>Luffing Jib Length 42,7 m (140 ft)</b>					
Radius					
13,7 (45)	23,7 (52.3)	23,4 (51.6)			
16,0 (50)	22,2 (50.1)	22,1 (49.8)	21,6 (48.3)	20,7 (46.2)	19,7 (43.8)
18,0 (60)	20,9 (45.9)	20,9 (45.8)	20,7 (45.3)	20,2 (44.6)	19,3 (42.5)
22,0 (70)	18,6 (42.0)	18,7 (42.1)	18,7 (42.0)	18,5 (41.6)	17,9 (40.1)
24,0 (80)	17,6 (38.5)	17,7 (38.7)	17,7 (38.8)	17,6 (38.6)	17,2 (37.6)
30,0 (100)	14,8 (32.4)	15,0 (32.7)	15,1 (33.0)	15,2 (33.2)	14,8 (32.3)
38,0 (120)	12,0 (27.5)	12,1 (27.8)	12,3 (28.2)	12,5 (28.5)	11,8 (27.3)
44,0 (140)	9,4 (23.8)	10,6 (24.0)	10,7 (24.4)	10,8 (24.7)	10,1 (23.1)
50,0 (160)					
54,0 (180)					

Boom m (ft)	21,3 (70)	30,5 (100)	42,7 (140)	51,8 (170)	61,0 (200)
<b>Luffing Jib Length 51,8 m (170 ft)</b>					
Radius					
13,7 (45)					
16,0 (50)					
18,0 (60)	16,5 (36.2)	16,5 (36.1)	16,2 (35.6)	15,9 (35.0)	- (32.3)
22,0 (70)	14,6 (32.9)	14,6 (32.9)	14,6 (32.8)	14,4 (32.4)	13,9 (31.0)
24,0 (80)	13,7 (29.8)	13,7 (30.0)	13,7 (30.0)	13,7 (29.9)	13,5 (29.6)
30,0 (100)	11,2 (24.4)	11,3 (24.7)	11,4 (24.9)	11,5 (25.1)	11,5 (25.1)
38,0 (120)	8,6 (19.9)	8,6 (20.1)	8,8 (20.5)	9,0 (20.7)	9,1 (21.0)
44,0 (140)	6,9 (16.1)	7,0 (16.4)	7,2 (16.7)	7,3 (17.0)	7,4 (17.3)
50,0 (160)	5,6 (13.1)	5,7 (13.3)	5,9 (13.6)	6,0 (13.9)	6,1 (14.2)
54,0 (180)		4,8 (10.2)	4,9 (10.6)	5,1 (10.9)	5,2 (11.2)

model 999



Meets ANSI B30.5 Requirements - Capacities do not exceed 75% of static tipping load.  
 NOTICE: This capacity chart is for reference only and must not be used for lifting purposes.



**WITHOUT  
QUESTION**

**IRVING EQUIPMENT LIMITED**  
1-800-561-CRANE (2726)  
[WWW.IRVINGEQUIPMENT.COM](http://WWW.IRVINGEQUIPMENT.COM)



- ✓ **FULL-SERVICE PROVIDER FOR CRANE RENTAL, RIGGING, AND LIFT PLANNING.**
- ✓ **DAILY, WEEKLY, MONTHLY RATES AVAILABLE**
- ✓ **DRY-LEASE AND LONG-TERM RENTALS**
- ✓ **OUR PURPOSE IS TO LEAVE 'NO ROOM FOR DOUBT'!**