



LIEBHERR LR1600/2 – (660T)



EQUIPMENT SPECIFICATIONS



**WITHOUT
QUESTION**

WWW.IRVINGEQUIPMENT.COM



WITHOUT QUESTION

IRVING EQUIPMENT LIMITED
1-800-561-CRANE (2726)
WWW.IRVINGEQUIPMENT.COM

INFO

IDENTIFICATION

| | |
|---------------|--------------|
| Asset Number | CR311 |
| Crane Make | Liebherr |
| Crane Model | LR1600/2 |
| Type | 660T Crawler |
| Serial Number | 097914 |

DIMENSIONS

| | |
|------------------------------|--------|
| Overall length crawlers | 35'11" |
| Overall width | 34'1" |
| Crawler pad width | 6'7" |
| Height, top of counterweight | 19'9" |
| Tailswing radius | 26'3" |

TRANSPORT / ASSEMBLY

| | |
|---|-----------------|
| Transport loads (SL13DFB, 452'+39') | 39 |
| Transportation, heaviest load (track) | 83,775lbs |
| Boom section height | 118" |
| Superstructure height / length (w/o SA frame) | 7'3"H x 40'4" L |
| Equipped w/Hydraulic pin puller | |
| Mechanical Outriggers for long-boom raising | |
| Superstructure counterweight | 418,950lb |
| Central ballast | 143,300lb |
| Derrick ballast plates | 771,600lb |

OPERATOR FEATURES

| |
|---|
| 3 Cameras for winch view |
| Hoist limit switch & 3-layer drum switch |
| Air conditioned cabin w/tilt & safety glazing |
| Variable boom and derrick system |
| Specialized Vario-Tray derrick ballast |

AVAILABLE EQUIPMENT

| | |
|-----------------------------------|---------------------|
| Main boom | 452' |
| Fixed jib | 39' |
| Derrick | 118' |
| 300/660T hook block (9/18 sheave) | 35,300lb / 18,750lb |
| 5 Sheave hook block (200T) | 4,400 to 15,430lb |
| 3 Sheave hook block (125T) | 3,300 to 12,125lb |
| 1 Sheave hook block (50T) | 2,200 to 6,600lb |

HOISTING PERFORMANCE

| | |
|--|----------------|
| Main hoist winch, line speed | 0-436ft/min |
| Main line max. single line pull | 39,700lb |
| Main hoist line dia. / length | 1.1" / 3,609ft |
| 2 nd hoist winch, line speed | 0-436ft/min |
| 2 nd line max. single line pull | 39,700lb |
| 2 nd hoist line dia. / length | 1.1" / 3,609ft |
| Slewing speed | 0-.95rpm |
| Travel Speed | 0-.95mph |

FACTORY BROCHURE



[\(Feet / Pounds\)](#)

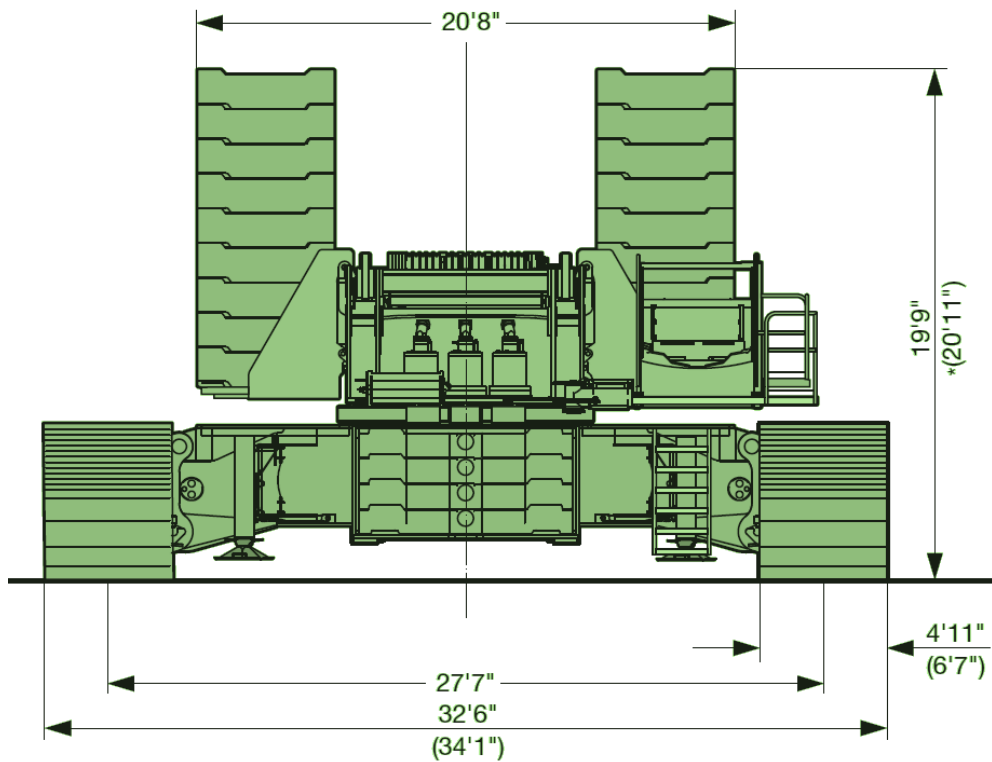
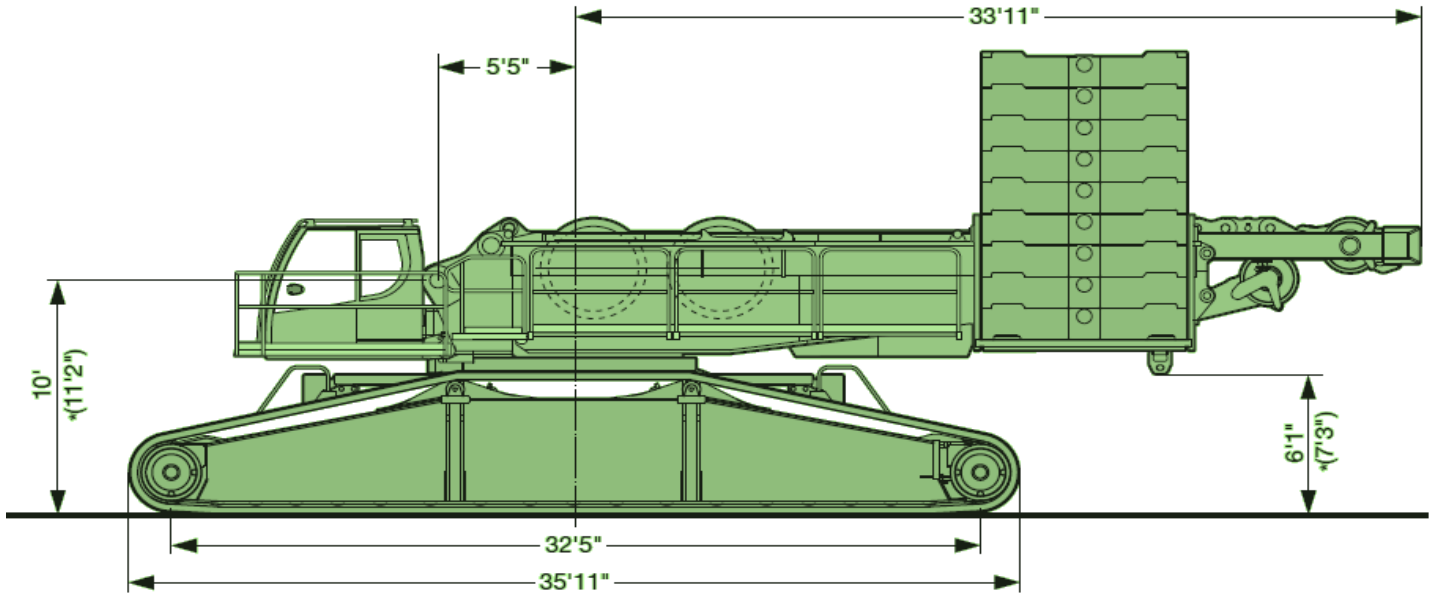
[\(Meters / Kilograms\)](#)



**WITHOUT
QUESTION**

IRVING EQUIPMENT LIMITED
1-800-561-CRANE (2726)
WWW.IRVINGEQUIPMENT.COM

DIMENSIONS

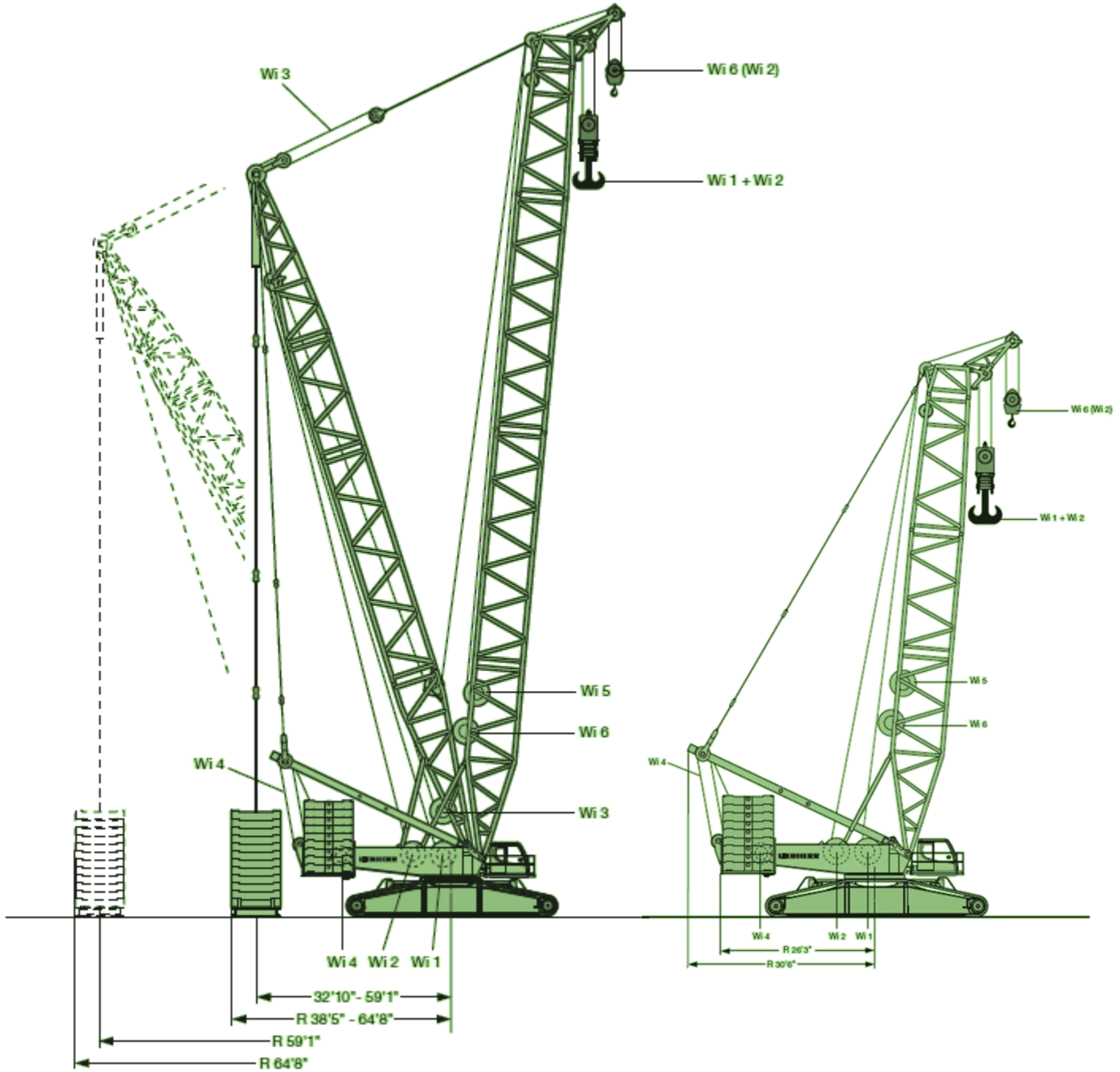




**WITHOUT
QUESTION**

IRVING EQUIPMENT LIMITED
1-800-561-CRANE (2726)
WWW.IRVINGEQUIPMENT.COM

DIMENSIONS





**WITHOUT
QUESTION**

IRVING EQUIPMENT LIMITED
 1-800-561-CRANE (2726)
WWW.IRVINGEQUIPMENT.COM

BOOM/JIB COMBINATIONS

S Main boom, heavy
 Flèche principale, lourde

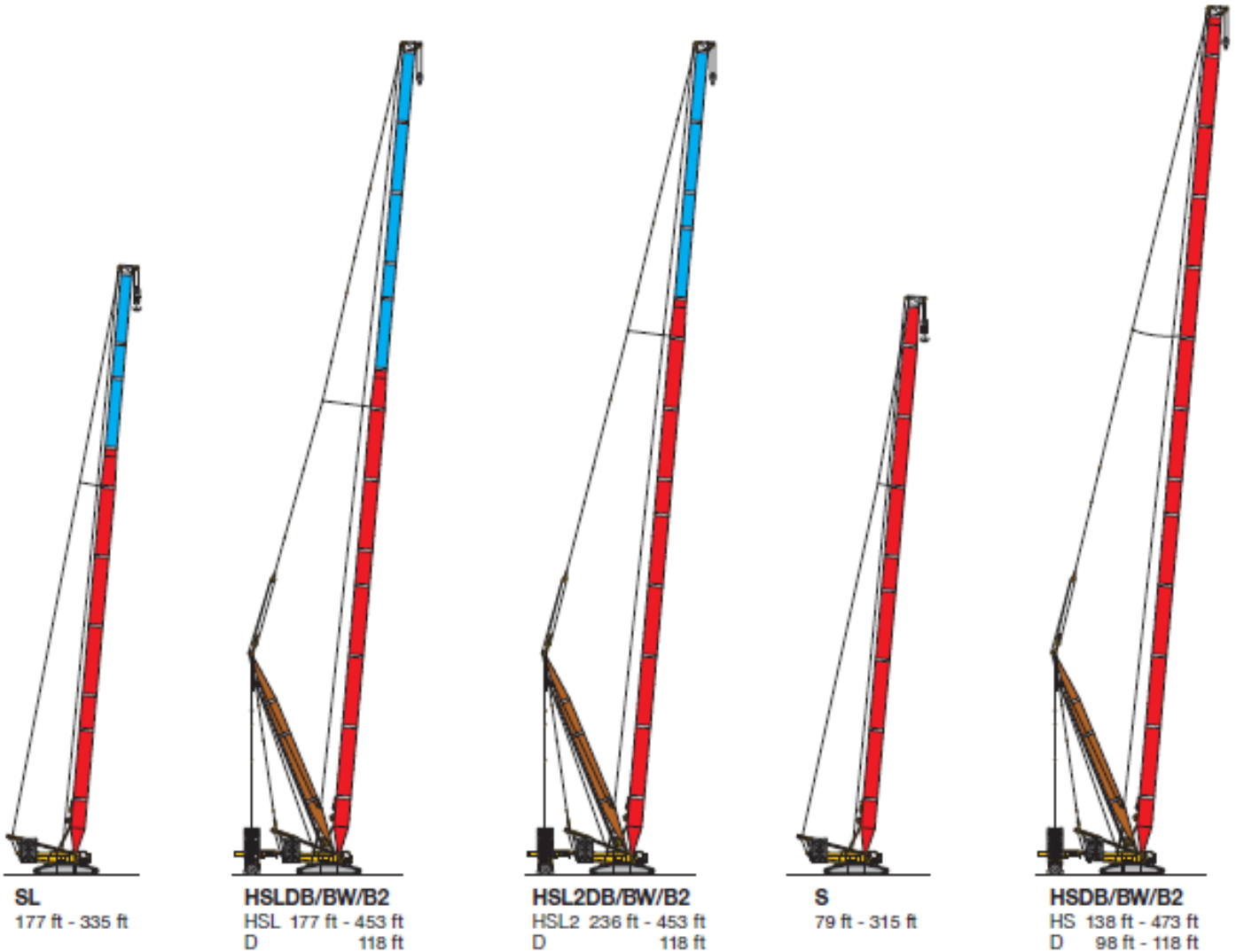
D Derrick
 Flèche derrick

F Lattice fly jib
 Fléchette treillis fixe

SL Main boom, heavy/light
 Flèche principale, lourde/légère

W Luffing fly jib, heavy
 Fléchette, lourde

B Suspended ballast
 Lest suspendu



US2847.01

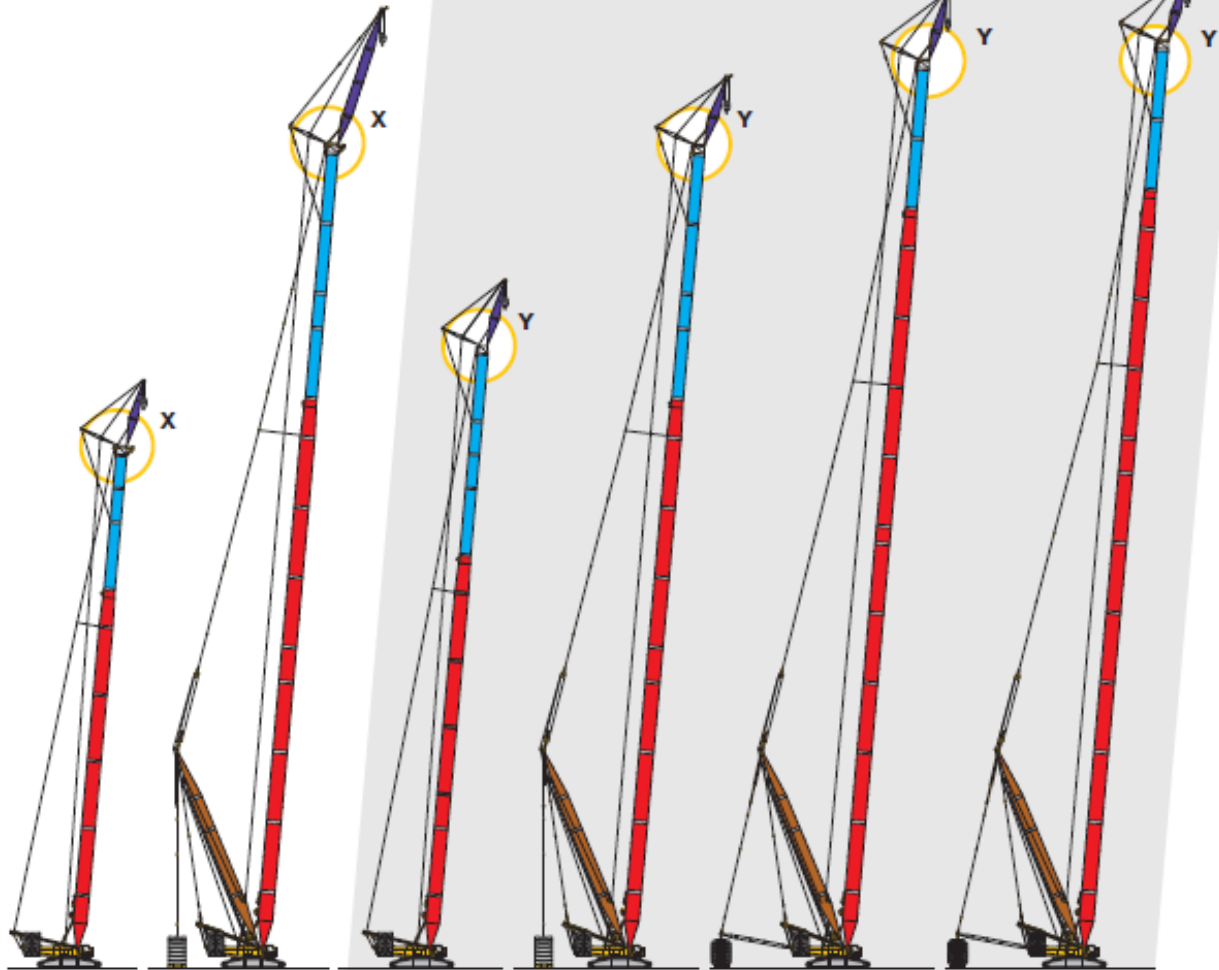
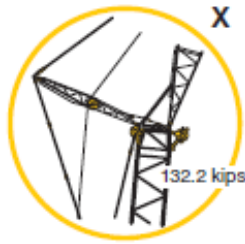




**WITHOUT
QUESTION**

IRVING EQUIPMENT LIMITED
 1-800-561-CRANE (2726)
WWW.IRVINGEQUIPMENT.COM

BOOM/JIB COMBINATIONS



| | | | | | |
|--|--|--|--|--|--|
| SLF SL 177 ft - 296 ft F 39 ft - 118 ft | HSL2DFB/BW/B2 HSL2 236 ft - 453 ft D 118 ft F 39 ft - 118 ft | SL3F SL3 236 ft - 354 ft F 39 ft - 118 ft | HSL4DFB/BW/B2 HSL4 236 ft - 453 ft D 118 ft F 39 ft - 118 ft | SL10DFB/B2 SL10 335 ft - 502 ft D 118 ft F 39 ft | SL13DFB/B2 SL13 335 ft - 512 ft D 118 ft F 39 ft |
|--|--|--|--|--|--|



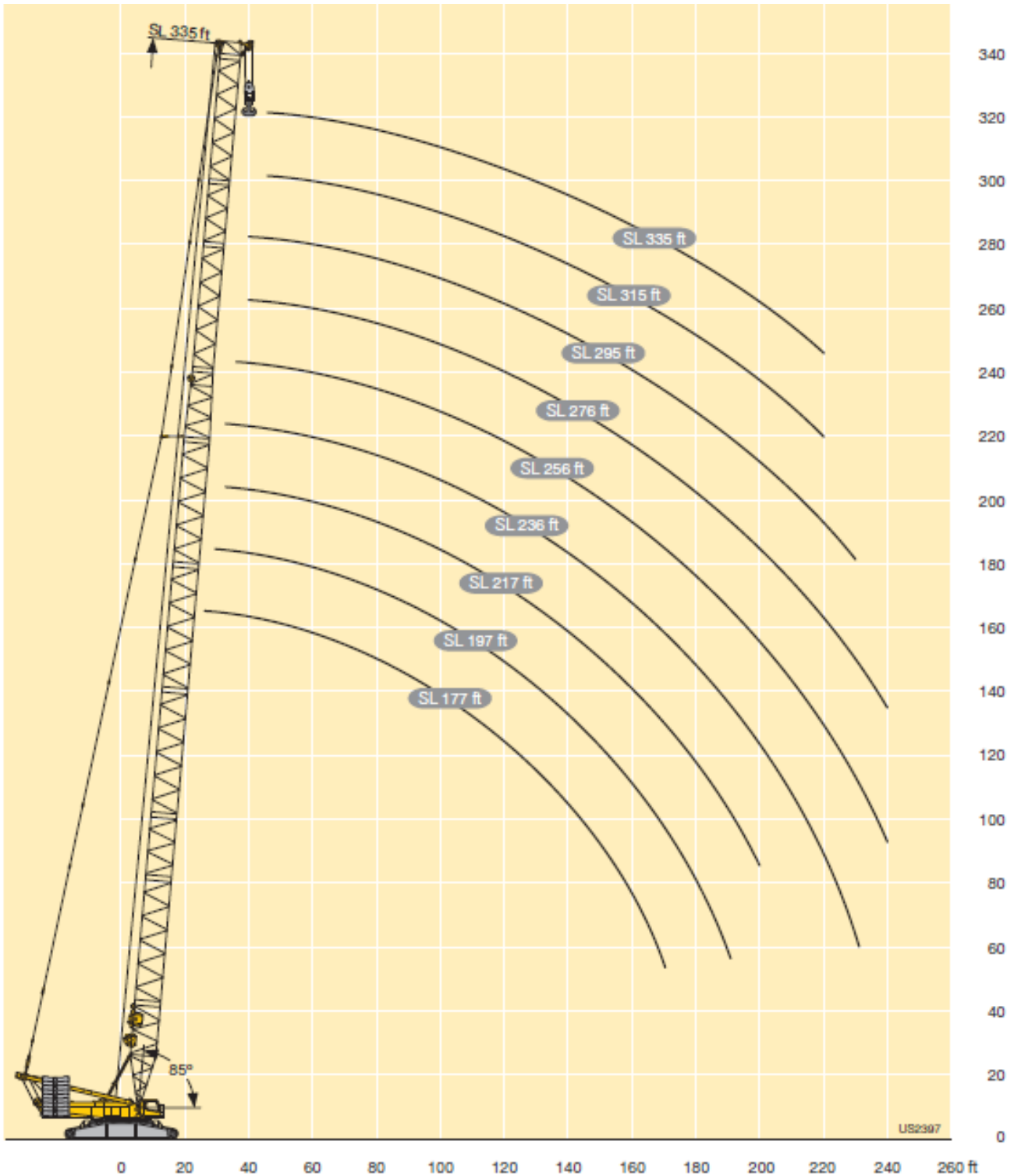
US2847.01



**WITHOUT
QUESTION**

IRVING EQUIPMENT LIMITED
1-800-561-CRANE (2726)
WWW.IRVINGEQUIPMENT.COM

LIFTING HEIGHTS – SL





**WITHOUT
QUESTION**



IRVING EQUIPMENT LIMITED
1-800-561-CRANE (2726)
WWW.IRVINGEQUIPMENT.COM

LIFTING CAPACITIES – SL

SL

SL 177 - 335



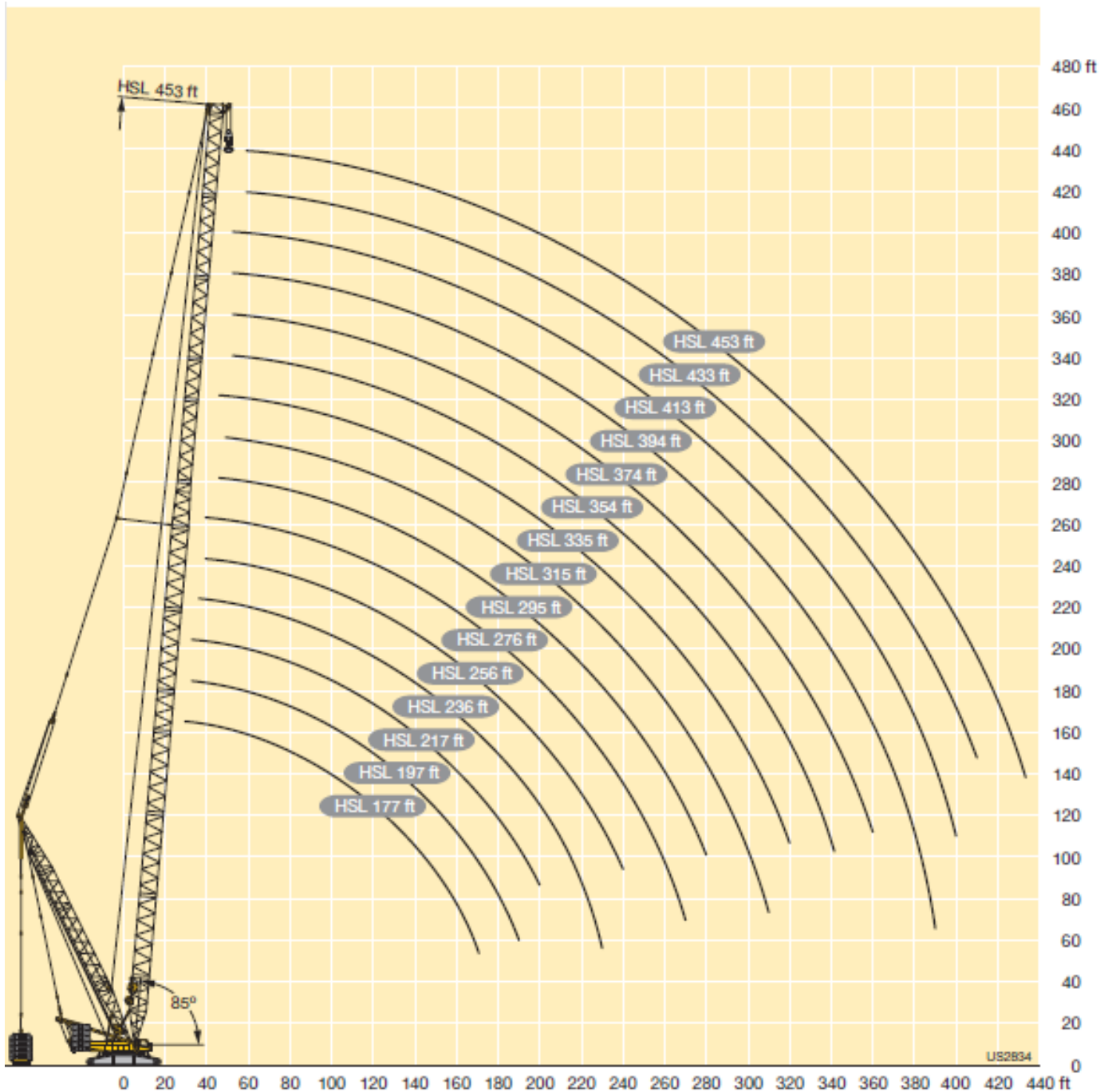
|  ft | SL 177 | SL 197 | SL 217 | SL 236 | SL 256 | SL 276 | SL 295 | SL 315 | SL 335 |  ft |
|---|--------|--------|--------|--------|--------|--------|--------|--------|--------|--|
| 26 | 679 | | | | | | | | | 26 |
| 28 | 679 | | | | | | | | | 28 |
| 30 | 679 | 657 | | | | | | | | 30 |
| 32 | 679 | 656 | 620 | 572 | | | | | | 32 |
| 34 | 665 | 643 | 612 | 567 | | | | | | 34 |
| 36 | 641 | 622 | 598 | 559 | 521 | | | | | 36 |
| 38 | 605 | 585 | 563 | 535 | 509 | | | | | 38 |
| 40 | 569 | 549 | 529 | 510 | 493 | 456 | 419 | | | 40 |
| 45 | 492 | 476 | 459 | 444 | 431 | 410 | 379 | 343 | 314 | 45 |
| 50 | 429 | 419 | 404 | 391 | 381 | 367 | 346 | 320 | 295 | 50 |
| 55 | 374 | 369 | 359 | 347 | 339 | 328 | 315 | 295 | 273 | 55 |
| 60 | 327 | 325 | 320 | 311 | 304 | 294 | 285 | 273 | 254 | 60 |
| 65 | 290 | 288 | 285 | 280 | 274 | 266 | 257 | 250 | 237 | 65 |
| 70 | 260 | 258 | 255 | 253 | 250 | 242 | 234 | 227 | 220 | 70 |
| 75 | 235 | 232 | 230 | 228 | 227 | 220 | 213 | 207 | 202 | 75 |
| 80 | 213 | 211 | 208 | 206 | 205 | 201 | 195 | 189 | 185 | 80 |
| 85 | 194 | 192 | 189 | 187 | 187 | 184 | 178 | 173 | 169 | 85 |
| 90 | 178 | 176 | 173 | 171 | 171 | 168 | 164 | 160 | 156 | 90 |
| 95 | 165 | 162 | 159 | 157 | 157 | 154 | 151 | 147 | 143 | 95 |
| 100 | 152 | 150 | 146 | 144 | 144 | 142 | 139 | 136 | 132 | 100 |
| 105 | 141 | 138 | 135 | 133 | 133 | 130 | 128 | 125 | 122 | 105 |
| 110 | 131 | 129 | 125 | 123 | 123 | 121 | 118 | 116 | 113 | 110 |
| 115 | 123 | 120 | 117 | 115 | 114 | 112 | 109 | 108 | 104 | 115 |
| 120 | 115 | 112 | 109 | 106 | 106 | 103 | 101 | 99.5 | 96.5 | 120 |
| 125 | 107 | 105 | 101 | 99 | 98.5 | 96 | 93.5 | 92 | 89.5 | 125 |
| 130 | 101 | 98 | 94.5 | 92.5 | 92 | 89.5 | 86.5 | 85 | 83 | 130 |
| 135 | 95 | 92 | 88.5 | 86.5 | 86 | 83.5 | 80.5 | 79 | 77 | 135 |
| 140 | 89.5 | 86.5 | 83 | 81 | 80.5 | 77.5 | 74.5 | 73 | 71 | 140 |
| 150 | 79.5 | 76.5 | 73 | 70.5 | 70 | 67 | 64 | 62 | 60.5 | 150 |
| 160 | 71.5 | 68 | 64 | 61.5 | 60.5 | 57.6 | 54.4 | 52.4 | 50.9 | 160 |
| 170 | 64 | 60.5 | 56.2 | 53.4 | 52.6 | 49.5 | 46.2 | 44.1 | 42.6 | 170 |
| 180 | | 53.8 | 49.5 | 46.6 | 45.7 | 42.5 | 39.3 | 37.1 | 35.5 | 180 |
| 190 | | 47.9 | 43.5 | 40.5 | 39.5 | 36.3 | 33 | 30.8 | 29.2 | 190 |
| 200 | | | 38.2 | 35.1 | 34 | 30.8 | 27.4 | 25.1 | 23.5 | 200 |
| 210 | | | | 30.2 | 29.1 | 25.8 | 22.4 | 20.1 | 18.3 | 210 |
| 220 | | | | 26.1 | 24.8 | 21.5 | 18 | 15.6 | 13.8 | 220 |
| 230 | | | | 22.5 | 21 | 17.6 | 14.1 | | | 230 |
| 240 | | | | | 17.5 | 14 | | | | 240 |



WITHOUT QUESTION

IRVING EQUIPMENT LIMITED
1-800-561-CRANE (2726)
WWW.IRVINGEQUIPMENT.COM

LIFTING HEIGHTS – HSLDB/BW/B2





WITHOUT QUESTION

IRVING EQUIPMENT LIMITED
 1-800-561-CRANE (2726)
 WWW.IRVINGEQUIPMENT.COM

LIFTING CAPACITIES – HSLDB/BW/B2

| ft | | HSL 177 – 453 | | | | | | | | | | | | | | | |
|-----|-------|---------------|------|------|------|------|------|------|------|------|------|------|------|------|------|------|-----|
| | | 177 | 197 | 217 | 236 | 256 | 276 | 295 | 315 | 335 | 354 | 374 | 394 | 413 | 433 | 453 | |
| 115 | - | 124 | 122 | 120 | 118 | 117 | 112 | 108 | 100 | 100 | 97.5 | 89.4 | 86.9 | 83.8 | 80.5 | 78.5 | |
| | B2 BW | 501 | 498 | 492 | 482 | 489 | 478 | 458 | 399 | 314 | 234 | 320 | 278 | 236 | 197 | 168 | |
| 120 | - | 536 | 533 | 526 | 527 | 523 | 512 | 465 | 396 | 304 | 211 | 333 | 285 | 240 | 200 | 169 | |
| | B2 BW | 508 | 505 | 499 | 492 | 497 | 486 | 461 | 397 | 304 | 212 | 331 | 286 | 240 | 200 | 169 | |
| 125 | - | 116 | 113 | 111 | 109 | 109 | 104 | 100 | 93.1 | 82.8 | 90.4 | 82.4 | 80 | 77 | 73.9 | 72 | |
| | B2 BW | 477 | 476 | 470 | 468 | 468 | 460 | 448 | 391 | 308 | 229 | 315 | 272 | 233 | 195 | 165 | |
| 130 | - | 510 | 510 | 502 | 501 | 501 | 493 | 456 | 388 | 299 | 208 | 329 | 282 | 237 | 198 | 167 | |
| | B2 BW | 483 | 483 | 476 | 475 | 476 | 468 | 451 | 389 | 299 | 209 | 327 | 283 | 237 | 198 | 167 | |
| 135 | - | 108 | 105 | 103 | 101 | 101 | 97.2 | 93.4 | 86.2 | 86.1 | 83.8 | 75.9 | 73.6 | 70.7 | 67.9 | 65.9 | |
| | B2 BW | 456 | 454 | 451 | 444 | 447 | 442 | 434 | 382 | 302 | 223 | 313 | 266 | 229 | 193 | 163 | |
| 140 | - | 489 | 487 | 483 | 476 | 479 | 474 | 443 | 390 | 293 | 205 | 329 | 279 | 234 | 195 | 164 | |
| | B2 BW | 462 | 461 | 458 | 451 | 455 | 450 | 437 | 381 | 294 | 206 | 329 | 279 | 234 | 196 | 164 | |
| 145 | - | 101 | 98.3 | 96.2 | 93.9 | 94.2 | 90.8 | 87.1 | 80 | 80 | 77.7 | 69.9 | 67.8 | 65 | 62.1 | 60.3 | |
| | B2 BW | 438 | 432 | 433 | 427 | 426 | 424 | 419 | 372 | 296 | 218 | 308 | 266 | 225 | 189 | 160 | |
| 150 | - | 470 | 464 | 464 | 458 | 457 | 455 | 426 | 370 | 288 | 201 | 325 | 275 | 230 | 192 | 162 | |
| | B2 BW | 444 | 439 | 439 | 433 | 433 | 431 | 422 | 371 | 289 | 202 | 326 | 275 | 230 | 192 | 162 | |
| 155 | - | 95.2 | 92.3 | 90.2 | 87.4 | 87.6 | 84.6 | 81.4 | 74.4 | 74.4 | 72.2 | 64.5 | 62.5 | 59.8 | 57 | 55.3 | |
| | B2 BW | 421 | 415 | 414 | 411 | 409 | 406 | 403 | 359 | 288 | 212 | 303 | 263 | 221 | 185 | 157 | |
| 160 | - | 451 | 448 | 444 | 441 | 441 | 439 | 436 | 410 | 359 | 281 | 198 | 322 | 270 | 226 | 189 | 159 |
| | B2 BW | 426 | 422 | 420 | 417 | 416 | 413 | 406 | 358 | 281 | 199 | 322 | 271 | 226 | 189 | 159 | |
| 165 | - | 89.6 | 86.6 | 84.4 | 81 | 81.2 | 78.4 | 75.9 | 69 | 69 | 66.9 | 59.3 | 57.3 | 54.7 | 52 | 50.4 | |
| | B2 BW | 403 | 400 | 396 | 395 | 393 | 388 | 387 | 346 | 280 | 207 | 298 | 259 | 218 | 182 | 154 | |
| 170 | - | 432 | 429 | 425 | 424 | 422 | 416 | 394 | 346 | 273 | 194 | 318 | 266 | 222 | 185 | 156 | |
| | B2 BW | 408 | 406 | 402 | 401 | 400 | 395 | 390 | 345 | 274 | 195 | 319 | 267 | 222 | 185 | 156 | |
| 175 | - | 78.7 | 75.5 | 73.2 | 69.8 | 70.1 | 67.6 | 65.8 | 59.1 | 59.3 | 57.3 | 49.8 | 47.9 | 45.5 | 42.9 | 41.4 | |
| | B2 BW | 384 | 370 | 366 | 364 | 364 | 359 | 357 | 319 | 262 | 193 | 286 | 250 | 210 | 175 | 147 | |
| 180 | - | 391 | 397 | 393 | 391 | 391 | 385 | 363 | 322 | 256 | 183 | 310 | 258 | 214 | 178 | 149 | |
| | B2 BW | 374 | 375 | 371 | 369 | 370 | 365 | 360 | 321 | 257 | 183 | 309 | 259 | 215 | 179 | 150 | |
| 185 | - | 68.8 | 65.4 | 63 | 60.6 | 60.8 | 58.5 | 56.8 | 50.4 | 50.7 | 48.7 | 41.3 | 39.6 | 37.2 | 34.7 | 33.4 | |
| | B2 BW | 322 | 340 | 341 | 335 | 337 | 334 | 329 | 294 | 243 | 177 | 274 | 240 | 202 | 172 | 145 | |
| 190 | - | 348 | 366 | 366 | 360 | 363 | 360 | 335 | 298 | 238 | 168 | 301 | 250 | 207 | 172 | 143 | |
| | B2 BW | 340 | 347 | 346 | 340 | 343 | 340 | 333 | 297 | 239 | 169 | 297 | 251 | 207 | 172 | 144 | |
| 195 | - | 61.4 | 58 | 55.7 | 53.2 | 53.3 | 50.9 | 49.2 | 42.7 | 43 | 41.1 | 33.8 | 32.1 | 29.9 | 27.5 | 26.2 | |
| | B2 BW | 282 | 310 | 316 | 314 | 311 | 311 | 308 | 271 | 224 | 162 | 264 | 226 | 193 | 169 | 141 | |
| 200 | - | 303 | 334 | 340 | 338 | 334 | 335 | 313 | 277 | 220 | 154 | 291 | 244 | 200 | 165 | 137 | |
| | B2 BW | 303 | 322 | 321 | 319 | 316 | 316 | 312 | 275 | 221 | 154 | 284 | 244 | 199 | 165 | 137 | |
| 205 | - | 52 | 49.5 | 46.8 | 47 | 44.5 | 42.5 | 36 | 36.3 | 34.5 | 27.3 | 25.6 | 23.5 | 21.1 | 19.9 | | |
| | B2 BW | 279 | 292 | 290 | 292 | 298 | 296 | 253 | 209 | 146 | 253 | 218 | 185 | 159 | 135 | | |
| 210 | - | 303 | 314 | 316 | 315 | 311 | 311 | 291 | 258 | 206 | 139 | 281 | 237 | 193 | 159 | 131 | |
| | B2 BW | 299 | 300 | 298 | 297 | 293 | 291 | 257 | 206 | 140 | 270 | 237 | 194 | 160 | 132 | | |
| 215 | - | 46.8 | 43.9 | 40.3 | 40.4 | 37.9 | 36 | 29.9 | 30.2 | 28.4 | 21.3 | 19.7 | 17.6 | 15.3 | | | |
| | B2 BW | 236 | 268 | 273 | 274 | 267 | 265 | 236 | 195 | 134 | 242 | 213 | 179 | 150 | 129 | | |
| 220 | - | 260 | 289 | 294 | 296 | 289 | 270 | 240 | 193 | 128 | 270 | 230 | 187 | 154 | 127 | | |
| | B2 BW | 260 | 281 | 278 | 279 | 274 | 271 | 239 | 193 | 130 | 256 | 231 | 188 | 155 | 127 | | |
| 225 | - | 38.7 | 34.4 | 34.4 | 31.9 | 30.2 | 24.4 | 24.7 | 22.9 | | | | | | | | |
| | B2 BW | 241 | 253 | 256 | 249 | 245 | 218 | 182 | 124 | 230 | 207 | 173 | 146 | 123 | | | |
| 230 | - | 262 | 273 | 277 | 270 | 250 | 222 | 180 | 120 | 258 | 223 | 181 | 149 | 123 | | | |
| | B2 BW | 261 | 260 | 261 | 257 | 251 | 222 | 181 | 121 | 243 | 223 | 182 | 150 | 123 | | | |
| 235 | - | 30.2 | 30.1 | 27.5 | 25.7 | 19.3 | | | | | | | | | | | |
| | B2 BW | 233 | 237 | 231 | 226 | 201 | 169 | 114 | 219 | 200 | 168 | 141 | 117 | | | | |
| 240 | - | 253 | 257 | 250 | 233 | 205 | 168 | 111 | 244 | 216 | 175 | 144 | 119 | | | | |
| | B2 BW | 245 | 243 | 240 | 233 | 204 | 168 | 112 | 229 | 215 | 176 | 145 | 119 | | | | |
| 245 | - | 26.2 | 26.3 | 23.3 | 21.3 | 15 | 15.2 | 13.4 | | | | | | | | | |
| | B2 BW | 210 | 217 | 213 | 208 | 186 | 156 | 104 | 207 | 192 | 161 | 136 | 113 | | | | |
| 250 | - | 230 | 236 | 231 | 216 | 193 | 156 | 103 | 230 | 209 | 170 | 139 | 114 | | | | |
| | B2 BW | 227 | 227 | 223 | 215 | 190 | 156 | 103 | 215 | 205 | 171 | 140 | 114 | | | | |
| 255 | - | 22.6 | 22.5 | 19.2 | 17.1 | | | | | | | | | | | | |
| | B2 BW | 173 | 197 | 195 | 189 | 171 | 144 | 95.3 | 195 | 184 | 157 | 130 | 108 | | | | |
| 260 | - | 194 | 211 | 211 | 198 | 180 | 145 | 94.7 | 216 | 201 | 166 | 135 | 110 | | | | |
| | B2 BW | 193 | 211 | 207 | 197 | 176 | 145 | 95 | 202 | 195 | 167 | 136 | 110 | | | | |
| 265 | - | 19 | 15.5 | | | | | | | | | | | | | | |
| | B2 BW | 175 | 177 | 172 | 157 | 133 | 87 | 184 | 176 | 154 | 126 | 105 | | | | | |
| 270 | - | 192 | 192 | 182 | 168 | 134 | 87 | 203 | 194 | 162 | 132 | 107 | | | | | |
| | B2 BW | 192 | 190 | 180 | 162 | 134 | 87.2 | 189 | 185 | 162 | 132 | 107 | | | | | |
| 275 | - | 159 | 156 | 144 | 121 | 79.6 | 173 | 168 | 150 | 123 | 101 | | | | | | |
| | B2 BW | 173 | 165 | 155 | 123 | 79.9 | 191 | 180 | 157 | 128 | 104 | | | | | | |
| 280 | - | 140 | 141 | 133 | 111 | 72.3 | 164 | 159 | 147 | 119 | 97.9 | | | | | | |
| | B2 BW | 152 | 150 | 142 | 112 | 72.8 | 181 | 178 | 153 | 125 | 101 | | | | | | |
| 285 | - | 117 | 128 | 122 | 101 | 65.1 | 155 | 152 | 143 | 116 | 95.1 | | | | | | |
| | B2 BW | 124 | 134 | 129 | 102 | 65.7 | 172 | 170 | 148 | 121 | 98.1 | | | | | | |
| 290 | - | 114 | 111 | 92.1 | 58.2 | 58.2 | 146 | 144 | 137 | 113 | 92.4 | | | | | | |
| | B2 BW | 118 | 117 | 93.4 | 58.6 | 58.8 | 162 | 161 | 144 | 118 | 95.2 | | | | | | |
| 295 | - | 119 | 115 | 93.8 | 58.8 | | | | | | | | | | | | |
| | B2 BW | 119 | 115 | 93.8 | 58.8 | | | | | | | | | | | | |

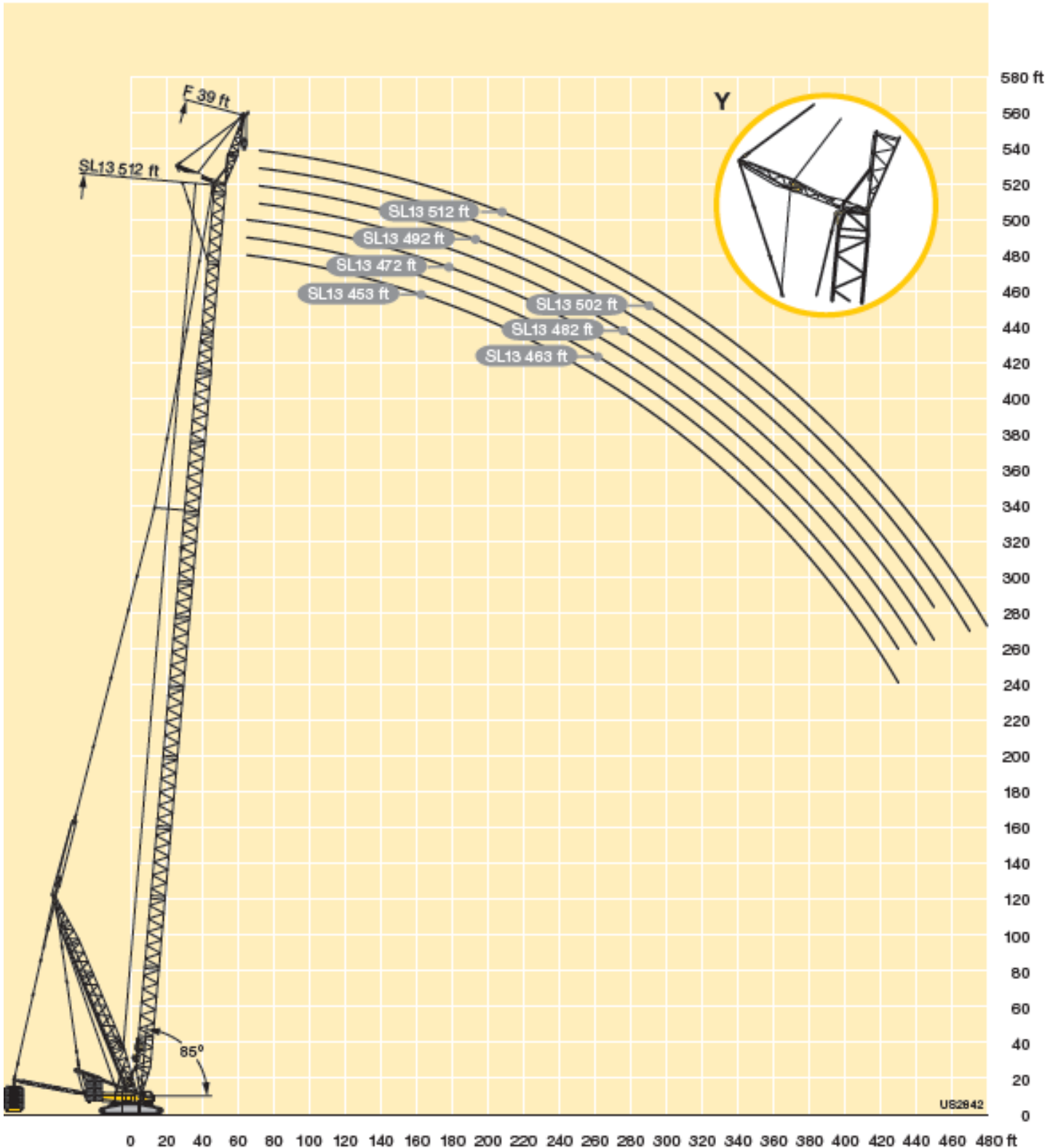
Sample only, charts for 115' – 290' radius shown



**WITHOUT
QUESTION**

IRVING EQUIPMENT LIMITED
1-800-561-CRANE (2726)
WWW.IRVINGEQUIPMENT.COM

LIFTING HEIGHTS – SL13DFB/B2

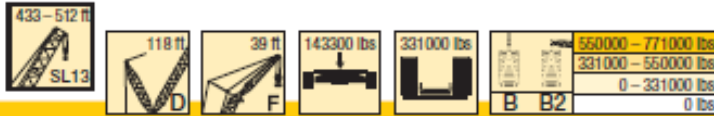




WITHOUT QUESTION

IRVING EQUIPMENT LIMITED
 1-800-561-CRANE (2726)
WWW.IRVINGEQUIPMENT.COM

LIFTING HEIGHTS – SL13DFB/B2



| ft | SL13 433 | SL13 443 | | SL13 453 | | SL13 463 | | SL13 472 | | SL13 482 | | SL13 492 | | SL13 502* | | SL13 512* | | |
|-----|----------|-------------|-------------|-------------|-------------|-------------|-------------|-------------|-------------|-------------|-------------|-------------|-------------|-------------|-------------|-------------|-------------|-------------|
| | | 11° | 16° | 11° | 16° | 11° | 16° | 11° | 16° | 11° | 16° | 11° | 16° | 11° | 16° | 11° | 16° | |
| 65 | B B2 | 177 230 | 181 225 | 172 228 | 217 213 | 173 212 | 168 204 | 165 195 | | | | | | | | | | |
| 70 | B B2 | 163 230 | 167 224 | 158 227 | 155 216 | 159 211 | 155 204 | 152 194 | | | | | | | | | | |
| 75 | B B2 | 148 230 | 152 223 | 144 228 | 148 216 | 145 211 | 141 201 | 145 202 | 143 194 | 135 187 | 139 179 | 133 174 | 137 168 | 130 166 | 128 161 | 126 157 | 112 152 | |
| 80 | B B2 | 135 230 | 139 221 | 131 224 | 134 215 | 132 209 | 136 200 | 129 201 | 132 194 | 125 191 | 130 186 | 123 178 | 126 172 | 121 166 | 125 165 | 118 160 | 121 156 | 114 151 |
| 85 | B B2 | 123 230 | 127 221 | 119 223 | 123 214 | 121 207 | 124 199 | 117 199 | 120 192 | 114 190 | 119 184 | 111 182 | 115 177 | 110 171 | 113 165 | 107 164 | 110 159 | 104 156 |
| 90 | B B2 | 113 230 | 116 219 | 109 221 | 112 213 | 110 206 | 113 198 | 107 198 | 110 191 | 104 188 | 108 183 | 101 181 | 105 175 | 100 169 | 103 164 | 96.9 158 | 100 154 | 93.9 150 |
| 95 | B B2 | 103 229 | 106 218 | 99.2 220 | 102 212 | 101 204 | 104 197 | 97.5 190 | 100 186 | 94.7 182 | 98.9 179 | 92.2 173 | 95.1 168 | 91.2 162 | 94.1 161 | 87.8 156 | 90.8 153 | 85 148 |
| 100 | B B2 | 94.1 227 | 96.8 218 | 90.3 220 | 93 209 | 92.1 205 | 94.8 195 | 88.7 188 | 91.4 185 | 86 181 | 90.1 178 | 83.6 171 | 86.4 168 | 82.8 161 | 85.5 155 | 79.4 150 | 82.3 147 | 76.7 143 |
| 105 | B B2 | 85.7 225 | 88.3 214 | 82 216 | 84.6 208 | 84 200 | 86.5 195 | 80.6 186 | 83.2 183 | 78 179 | 82 176 | 75.7 170 | 78.3 165 | 74.9 159 | 77.6 151 | 71.7 145 | 74.3 140 | 69 134 |
| 110 | B B2 | 78.2 223 | 80.7 214 | 74.6 215 | 77.1 206 | 76.6 201 | 79 193 | 73.3 186 | 75.8 183 | 70.8 177 | 74.6 174 | 68.5 168 | 71.1 165 | 67.8 158 | 70.3 151 | 64.6 144 | 67.2 139 | 62 134 |
| 115 | B B2 | 71.2 226 | 73.5 214 | 67.6 214 | 70 202 | 69.7 199 | 72 189 | 66.5 182 | 68.8 183 | 64 176 | 67.7 173 | 61.8 167 | 64.3 162 | 61.2 156 | 63.6 151 | 58 144 | 60.5 139 | 55.5 134 |
| 120 | B B2 | 64.7 225 | 66.9 212 | 61.1 211 | 63.4 202 | 63.3 196 | 65.5 190 | 60.1 182 | 62.3 178 | 57.7 175 | 61.3 172 | 55.5 165 | 57.9 161 | 55 155 | 57.3 150 | 51.8 144 | 54.2 139 | 49.4 134 |
| 125 | B B2 | 58.5 219 | 60.7 211 | 55 210 | 57.2 198 | 57.3 196 | 59.4 186 | 54.1 181 | 56.2 182 | 51.8 173 | 55.3 171 | 49.6 164 | 51.9 159 | 49.2 153 | 51.4 148 | 46 141 | 48.3 136 | 43.6 131 |
| 130 | B B2 | 52.9 215 | 54.9 210 | 49.4 207 | 51.5 198 | 51.7 193 | 53.8 186 | 48.6 185 | 50.6 180 | 46.3 175 | 49.7 172 | 44.2 169 | 46.3 163 | 43.8 158 | 45.9 152 | 40.7 147 | 42.9 141 | 38.3 136 |
| 135 | B B2 | 47.7 213 | 49.7 206 | 44.3 203 | 46.3 195 | 46.7 190 | 48.6 183 | 43.6 178 | 45.5 173 | 41.3 170 | 44.7 167 | 39.3 161 | 41.3 156 | 38.9 150 | 40.9 145 | 35.8 140 | 37.9 134 | 33.5 129 |
| 140 | B B2 | 42.8 211 | 44.7 206 | 39.4 203 | 41.3 192 | 41.8 189 | 43.7 180 | 38.7 177 | 40.8 177 | 36.5 174 | 39.8 168 | 34.5 166 | 36.5 159 | 34.2 155 | 36.1 148 | 31.1 141 | 33.2 136 | 28.8 131 |
| 150 | B B2 | 33.7 207 | 35.4 197 | 30.4 193 | 32.2 184 | 32.8 182 | 34.6 174 | 29.8 178 | 31.6 170 | 27.7 167 | 30.8 162 | 25.7 154 | 27.5 149 | 25.5 145 | 27.3 140 | 22.5 134 | 24.3 129 | 20.2 124 |
| 160 | B B2 | 25.5 203 | 27.1 192 | 22.3 189 | 23.9 180 | 24.8 178 | 26.4 174 | 21.8 169 | 23.4 167 | 19.7 164 | 22.7 156 | 19.5 150 | 19.3 146 | 17.9 141 | 19.3 136 | 14.2 130 | 15.8 125 | 12.2 120 |
| 170 | B B2 | 18.2 198 | 19.7 188 | 15 184 | 16.5 175 | 17.6 174 | 19.1 165 | 14.6 171 | 16.2 164 | 12.6 155 | 15.4 148 | 12.3 142 | 12.2 139 | 11.1 134 | 12.2 129 | 8.1 124 | 9.1 119 | 5.1 114 |
| 180 | B B2 | 188 198 | 180 187 | 176 183 | 169 173 | 168 172 | 160 164 | 166 171 | 161 163 | 157 160 | 152 155 | 149 145 | 143 141 | 138 135 | 135 131 | 136 128 | 131 124 | 128 119 |
| 190 | B B2 | 182 192 | 175 182 | 171 178 | 162 168 | 161 167 | 155 159 | 161 167 | 155 160 | 152 156 | 147 151 | 144 148 | 139 142 | 135 137 | 131 131 | 133 128 | 129 124 | 125 119 |
| 200 | B B2 | 176 186 | 171 177 | 166 172 | 158 164 | 157 163 | 150 155 | 157 163 | 150 156 | 147 152 | 142 147 | 140 144 | 134 138 | 130 133 | 126 129 | 129 123 | 125 119 | 118 113 |
| 210 | B B2 | 171 181 | 166 172 | 162 167 | 154 159 | 153 158 | 146 151 | 153 159 | 146 152 | 143 148 | 139 143 | 136 140 | 131 134 | 127 130 | 123 125 | 126 120 | 121 115 | 118 111 |
| 220 | B B2 | 165 177 | 161 168 | 157 163 | 149 154 | 148 153 | 142 147 | 149 155 | 143 148 | 139 144 | 135 140 | 133 137 | 127 131 | 123 126 | 120 122 | 123 117 | 118 112 | 115 110 |
| 230 | B B2 | 160 173 | 154 164 | 149 159 | 144 151 | 143 150 | 137 143 | 144 151 | 139 145 | 136 140 | 132 136 | 129 133 | 124 127 | 120 123 | 116 118 | 120 114 | 115 109 | 112 111 |
| 240 | B B2 | 155 169 | 151 161 | 146 156 | 141 148 | 139 147 | 133 140 | 138 144 | 133 142 | 131 137 | 128 133 | 125 130 | 120 124 | 117 120 | 113 115 | 117 111 | 113 107 | 109 104 |

* raisable only with B2 - soulement raisable avec B2

Sample only, charts for 65' – 240' radius shown. (SL433 – 512)



**WITHOUT
QUESTION**

IRVING EQUIPMENT LIMITED
1-800-561-CRANE (2726)
WWW.IRVINGEQUIPMENT.COM



- ✓ **FULL-SERVICE PROVIDER FOR CRANE RENTAL, RIGGING, AND LIFT PLANNING.**
- ✓ **WEEKLY, MONTHLY RATES AVAILABLE**
- ✓ **DRY-LEASE AND LONG-TERM RENTALS**
- ✓ **OUR PURPOSE IS TO LEAVE 'NO ROOM FOR DOUBT'!**

