



LINK-BELT HTC-86100



EQUIPMENT SPECIFICATIONS



**WITHOUT
QUESTION**

WWW.IRVINGEQUIPMENT.COM



WITHOUT QUESTION

IRVING EQUIPMENT LIMITED
 1-800-561-CRANE (2726)
WWW.IRVINGEQUIPMENT.COM

INFO

IDENTIFICATION

Asset Number	CR320
Crane Make	Link-Belt
Crane Model	HTC-86100
Type	Hyd. Truck Crane
Serial Number	N3L1-6786

DIMENSIONS

Overall length of carrier (bumper-bumper)	37'11"
Overall width of carrier	8'6"
Transportation height	11'5"
Fullspan outriggers (outside-outside)	26'
Midspan outriggers (outside-outside)	16'7"
Retracted outriggers (outside-outside)	9'8"
Outriggers, front to rear length (centre-centre)	20'6"
Tailswing radius (without counterweight)	13'1"

Tailswing radius (with counterweight)	13'9"
Overall length, boom in rest.	45'7"
Center of rotation to back bumper	10'9"
Center of rotation to front bumper	26'10"
Weight, base crane	79,424lb
Boom Dolly	Nelson 2-axle

FEATURES

- Stow n' Go steel pontoons
- Swing camera, right-side, rear, and winch cameras
- Link-Belt PULSE operating system
- Integrated storage and work lights
- Bi-fold, offsetable jib extensions w/optional extensions.

HOISTING INFO

Counterweight	39,500lb
Main boom max. length	5-Section, 140'
Fixed jib, length options	35', 58', + 16' +16' extensions
Fixed jib, offset angles	2°, 15°, 30°, or 45°
Maximum tip height	237' (205' w/o extensions)
Swing speed (360° continuous)	1.7rpm
Travel Speed	101 km/hr
Hook blocks	3-sheave (60T SWL, 1,355lb), 1-sheave (25T SWL, 746lb, Ball (10T SWL, 583lb)
Permissible line pull, single line	15,600lb (either winch)
Max line speed	460 feet per minute
Gradeability	48.4%
Hoist rope length	730' x ¾" (19mm) main, 600' x ¾" (19mm) aux.

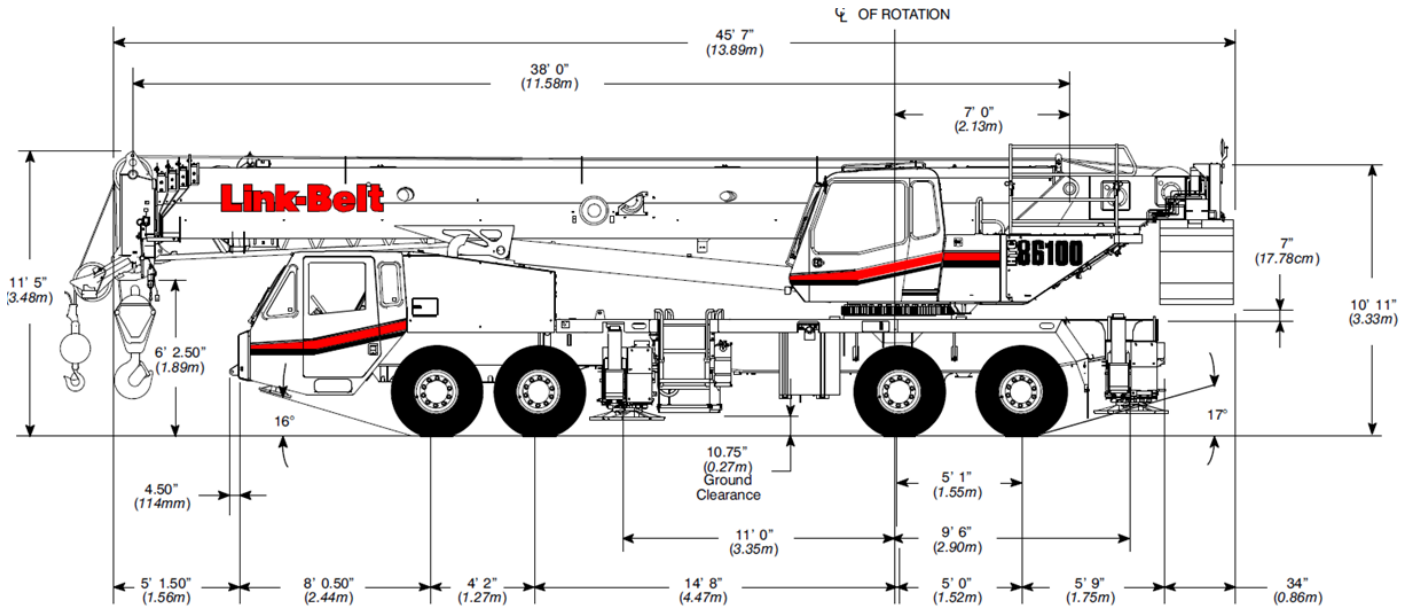




**WITHOUT
QUESTION**

IRVING EQUIPMENT LIMITED
 1-800-561-CRANE (2726)
 WWW.IRVINGEQUIPMENT.COM

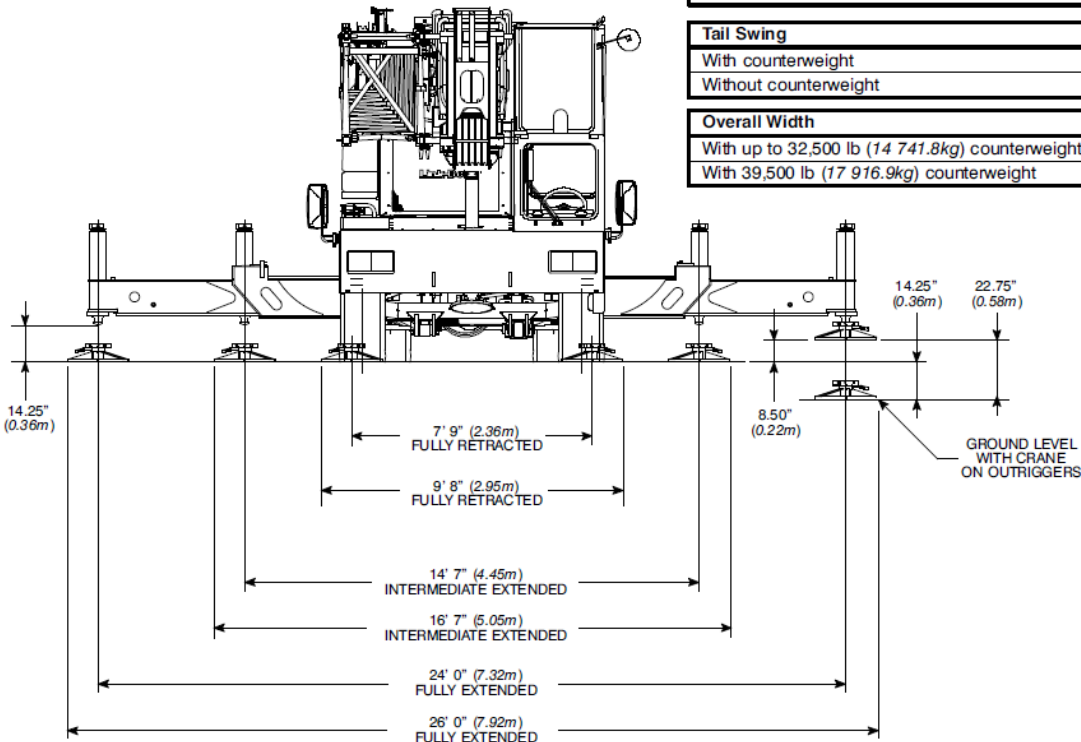
LINK-BELT HTC-86100 | GENERAL DIMENSIONS



Turning Radius	English	Metric
Wall to wall over carrier	48' 4"	14.7m
Wall to wall over boom	49' 2"	15.0m
Wall to wall over boom attachment	51' 0"	15.5m
Curb to curb	44' 1"	13.4m
Centerline of tire	43' 4"	13.2m

Tail Swing	English	Metric
With counterweight	13' 9"	4.2m
Without counterweight	13' 1"	4.0m

Overall Width	English	Metric
With up to 32,500 lb (14 741.8kg) counterweight	8' 6"	2.6m
With 39,500 lb (17 916.9kg) counterweight	11' 0"	3.4m



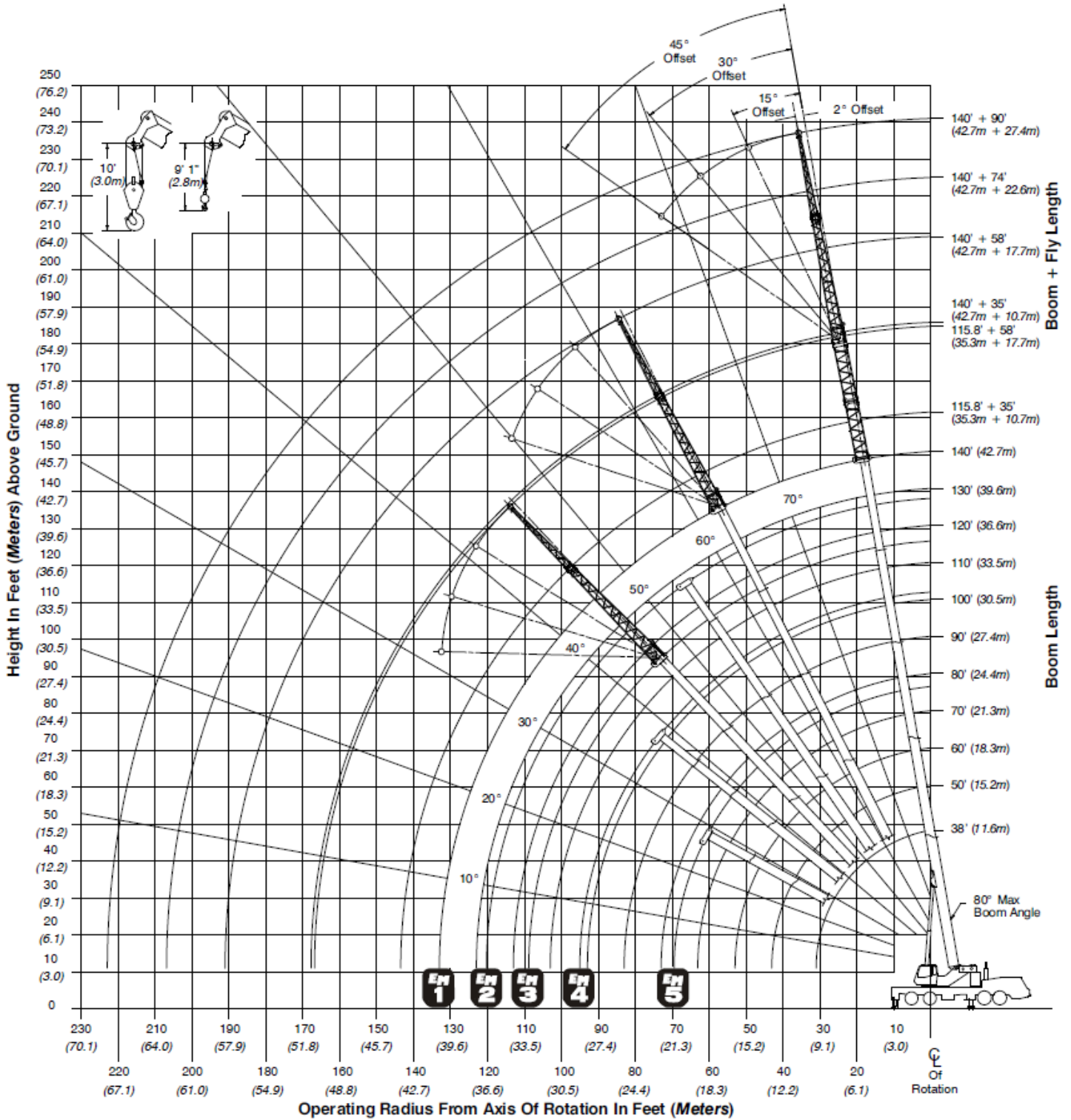
Not To Scale



**WITHOUT
QUESTION**

IRVING EQUIPMENT LIMITED
 1-800-561-CRANE (2726)
WWW.IRVINGEQUIPMENT.COM

LINK-BELT HTC-86100 | WORKING RANGE





**WITHOUT
QUESTION**

IRVING EQUIPMENT LIMITED
 1-800-561-CRANE (2726)
WWW.IRVINGEQUIPMENT.COM

LINK-BELT HTC-86100 | MAIN BOOM LIFTING CAPACITIES

Rated Lifting Capacities In Pounds

Full
39,500 lb

Load Radius (ft)	38.0 ft			50.0 ft		60.0 ft		70.0 ft		80.0 ft		90.0 ft	
	∠ °	360°	Rear	∠ °	360°	∠ °	360°	∠ °	360°	∠ °	360°	∠ °	360°
7	73.0	-	200,000*										
8	71.5	180,000	180,000										
9	69.5	167,600	167,600										
10	68.0	158,800	158,800	74.0	80,500	77.0	58,000	79.5	55,900				
12	64.5	143,600	143,600	71.5	75,100	75.0	53,800	77.5	52,300	79.5	41,900		
15	59.5	123,700	123,700	67.5	68,100	72.0	48,400	75.0	47,500	77.5	41,900	79.0	33,500
20	49.5	91,300	91,300	61.0	59,100	67.0	41,400	71.0	41,100	74.0	41,900	76.0	33,500
25	37.5	71,000	71,000	54.0	52,200	61.5	36,100	66.5	36,300	70.0	37,900	73.0	33,500
30	18.5	57,200	57,200	46.0	46,900	55.5	32,000	61.5	32,400	66.0	34,000	69.5	31,400
35				37.0	42,800	49.0	28,800	56.5	29,200	62.0	30,400	66.0	28,200
40				24.0	39,600	42.0	26,100	51.5	26,800	58.0	27,600	62.5	25,500
45						33.5	23,900	45.5	24,400	53.5	25,100	58.5	23,300
50						22.0	22,200	39.0	22,600	48.5	23,100	54.5	21,400
55								31.5	20,800	43.0	21,300	50.5	19,800
60								20.5	19,300	37.0	19,800	46.0	18,300
65										29.5	18,500	41.0	17,100
70										19.5	17,400	35.0	16,000
75												28.5	14,900
80												19.0	14,100
Min.Bm.	0.0	31,900	31,900	0.0	18,200	0.0	13,000	0.0	10,800	0.0	9,200	0.0	7,900
Ang./Cap.	(31.0)			(43.0)		(53.0)		(63.0)		(73.0)		(83.0)	

Load Radius (ft)	100.0 ft		110.0 ft		120.0 ft		130.0 ft		140.0 ft	
	∠ °	360°	∠ °	360°	∠ °	360°	∠ °	360°	∠ °	360°
20	77.5	32,200	79.0	27,200						
25	75.0	32,200	76.5	27,200	78.0	28,100	79.5	26,900		
30	72.0	32,200	74.0	27,200	76.0	28,100	77.5	26,500	78.5	24,400
35	69.0	29,700	71.5	27,200	73.5	28,100	75.5	26,300	77.0	24,100
40	66.0	27,100	69.0	27,200	71.5	28,100	73.5	26,100	75.0	24,000
45	62.5	24,900	66.0	25,900	69.0	26,200	71.5	25,900	73.5	23,800
50	59.5	23,000	63.0	23,800	66.5	24,100	69.0	25,200	71.5	23,700
55	56.0	21,400	60.0	22,000	63.5	22,300	67.0	23,500	69.5	23,600
60	52.0	19,900	57.0	20,400	61.0	20,800	64.5	21,900	67.5	22,100
65	48.0	18,600	53.5	18,900	58.0	19,300	61.5	20,500	65.0	20,800
70	44.0	17,500	50.0	17,700	55.0	18,100	59.0	19,200	62.5	19,200
75	39.0	16,500	46.5	16,600	51.5	17,000	56.0	17,700	60.0	17,400
80	33.5	15,400	42.0	15,600	48.5	15,900	53.0	15,900	57.5	15,600
85	27.5	14,600	37.5	14,600	44.5	14,800	50.0	14,400	54.5	14,100
90	18.5	13,800	32.5	13,700	40.5	13,400	46.5	13,000	51.5	12,700
95			26.5	12,500	36.5	12,300	43.0	11,900	48.5	11,600
100			18.0	11,500	31.5	11,200	39.5	10,900	45.5	10,800
105					25.5	10,200	35.0	9,900	42.0	9,600
110					17.0	9,400	30.5	9,000	38.5	8,800
115							24.5	8,300	34.5	8,000
120							17.0	7,500	29.5	7,300
125									24.0	6,600
130									16.5	6,000
Min.Bm.	0.0	6,600	0.0	5,500	0.0	4,400	0.0	3,300	0.0	2,400
Ang./Cap.	(93.0)		(103.0)		(113.0)		(123.0)		(133.0)	

*Sample only, refer to s/n capacity charts for full range of capacities.



**WITHOUT
QUESTION**

IRVING EQUIPMENT LIMITED
1-800-561-CRANE (2726)
WWW.IRVINGEQUIPMENT.COM

LINK-BELT HTC-86100 | MAIN BOOM LIFTING CAPACITIES

Rated Lifting Capacities In Pounds

Full **32,500 lb**

Load Radius (ft)	38.0 ft		50.0 ft		60.0 ft		70.0 ft		80.0 ft		90.0 ft		
	∠°	360°	Rear	∠°	360°	∠°	360°	∠°	360°	∠°	360°	∠°	360°
7	73.0	-	200,000*										
8	71.5	180,000	180,000										
9	69.5	167,100	167,100										
10	68.0	158,300	158,300	74.0	80,500	77.0	58,000	79.5	55,900				
12	64.5	142,700	142,700	71.5	75,100	75.0	53,800	77.5	52,300	79.5	41,900		
15	59.5	119,300	119,300	67.5	68,100	72.0	48,400	75.0	47,500	77.5	41,900	79.0	33,500
20	49.5	87,600	87,600	61.0	59,100	67.0	41,400	71.0	41,100	74.0	41,900	76.0	33,500
25	37.5	68,000	68,000	54.0	52,200	61.5	36,100	66.5	36,300	70.0	37,900	73.0	33,500
30	18.5	54,700	54,700	46.0	46,900	55.5	32,000	61.5	32,400	66.0	34,000	69.5	31,400
35				37.0	42,800	49.0	28,800	56.5	29,200	62.0	30,400	66.0	28,200
40				24.0	39,600	42.0	26,100	51.5	26,600	58.0	27,600	62.5	25,500
45						33.5	23,900	45.5	24,400	53.5	25,100	58.5	23,300
50						22.0	22,200	39.0	22,600	48.5	23,100	54.5	21,400
55								31.5	20,800	43.0	21,300	50.5	19,800
60								20.5	19,300	37.0	19,800	46.0	18,300
65										29.5	18,500	41.0	17,100
70										19.5	17,400	35.0	16,000
75												28.5	14,900
80												19.0	14,100
Min.Bm.	0.0	31,900	31,900	0.0	18,200	0.0	13,000	0.0	10,800	0.0	9,200	0.0	7,900
Ang./Cap.	(31.0)			(43.0)		(53.0)		(63.0)		(73.0)		(83.0)	

Load Radius (ft)	100.0 ft		110.0 ft		120.0 ft		130.0 ft		140.0 ft	
	∠°	360°	∠°	360°	∠°	360°	∠°	360°	∠°	360°
20	77.5	32,200	79.0	27,200						
25	75.0	32,200	76.5	27,200	78.0	28,100	79.5	26,900		
30	72.0	32,200	74.0	27,200	76.0	28,100	77.5	26,500	78.5	24,400
35	69.0	29,700	71.5	27,200	73.5	28,100	75.5	26,300	77.0	24,100
40	66.0	27,100	69.0	27,200	71.5	28,100	73.5	26,100	75.0	24,000
45	62.5	24,900	66.0	25,900	69.0	26,200	71.5	25,900	73.5	23,800
50	59.5	23,000	63.0	23,800	66.5	24,100	69.0	25,200	71.5	23,700
55	56.0	21,400	60.0	22,000	63.5	22,300	67.0	23,500	69.5	23,600
60	52.0	19,900	57.0	20,400	61.0	20,800	64.5	21,900	67.5	22,100
65	48.0	18,600	53.5	18,900	58.0	19,300	61.5	20,000	65.0	19,600
70	44.0	17,500	50.0	17,700	55.0	18,100	59.0	17,700	62.0	17,400
75	39.0	16,500	46.5	16,500	51.5	16,200	56.0	15,800	59.5	15,500
80	33.5	14,900	42.0	14,800	48.0	14,500	53.0	14,100	57.0	13,800
85	27.0	13,500	37.5	13,400	44.5	13,100	49.5	12,700	54.0	12,500
90	18.0	12,200	32.5	12,200	40.5	11,900	46.5	11,600	51.0	11,300
95			26.0	11,100	36.0	10,800	43.0	10,500	48.0	10,200
100			17.5	10,100	31.0	9,800	39.0	9,500	45.0	9,200
105					25.0	8,900	35.0	8,600	41.5	8,300
110					17.0	8,100	30.0	7,800	38.0	7,500
115							24.5	7,100	34.0	6,800
120							16.5	6,400	29.5	6,100
125									24.0	5,500
130									16.0	5,000
Min.Bm.	0.0	6,600	0.0	5,500	0.0	4,400	0.0	3,300	0.0	2,400
Ang./Cap.	(93.0)		(103.0)		(113.0)		(123.0)		(133.0)	

() Radius For Minimum Boom Angle Capacities (Shown In Parenthesis) Are In Feet.

*Sample only, refer to s/n capacity charts for full range of capacities.



**WITHOUT
QUESTION**

IRVING EQUIPMENT LIMITED
1-800-561-CRANE (2726)
WWW.IRVINGEQUIPMENT.COM

LINK-BELT HTC-86100 | MAIN BOOM LIFTING CAPACITIES

Rated Lifting Capacities In Pounds

Full

26,500 lb

Load Radius (ft)	38.0 ft			50.0 ft		60.0 ft		70.0 ft		80.0 ft		90.0 ft	
	∠°	360°	Rear	∠°	360°	∠°	360°	∠°	360°	∠°	360°	∠°	360°
7	73.0	-	200,000*										
8	71.5	180,000	180,000										
9	69.5	166,600	166,600										
10	68.0	157,900	157,900	74.0	80,500	77.0	58,000	79.5	55,900				
12	64.5	141,500	141,500	71.5	75,100	75.0	53,800	77.5	52,300	79.5	41,900		
15	59.5	115,200	115,200	67.5	68,100	72.0	48,400	75.0	47,500	77.5	41,900	79.0	33,500
20	49.5	84,400	84,400	61.0	59,100	67.0	41,400	71.0	41,100	74.0	41,900	78.0	33,500
25	37.5	65,400	65,400	54.0	52,200	61.5	36,100	66.5	36,300	70.0	37,900	73.0	33,500
30	18.5	52,500	52,500	48.0	46,900	55.5	32,000	61.5	32,400	68.0	34,000	69.5	31,400
35				37.0	42,800	49.0	28,800	56.5	29,200	62.0	30,400	68.0	28,200
40				24.0	37,000	42.0	26,100	51.5	26,800	58.0	27,600	62.5	25,500
45						33.5	23,900	45.5	24,400	53.5	25,100	58.5	23,300
50						22.0	22,200	39.0	22,600	48.5	23,100	54.5	21,400
55								31.5	20,800	43.0	21,300	50.5	19,800
60								20.5	19,300	37.0	19,800	46.0	18,300
65										29.5	18,500	41.0	17,100
70										19.5	16,800	35.0	16,000
75												28.5	14,900
80												18.5	13,400
Min.Bm.	0.0	31,900	31,900	0.0	18,200	0.0	13,000	0.0	10,800	0.0	9,200	0.0	7,900
Ang./Cap.	(31.0)			(43.0)		(53.0)		(63.0)		(73.0)		(83.0)	

Load Radius (ft)	100.0 ft		110.0 ft		120.0 ft		130.0 ft		140.0 ft	
	∠°	360°	∠°	360°	∠°	360°	∠°	360°	∠°	360°
20	77.5	32,200	79.0	27,200						
25	75.0	32,200	76.5	27,200	78.0	28,100	79.5	26,900		
30	72.0	32,200	74.0	27,200	76.0	28,100	77.5	26,500	78.5	24,400
35	69.0	29,700	71.5	27,200	73.5	28,100	75.5	26,300	77.0	24,100
40	66.0	27,100	69.0	27,200	71.5	28,100	73.5	26,100	75.0	24,000
45	62.5	24,900	66.0	25,900	69.0	26,200	71.5	25,900	73.5	23,800
50	59.5	23,000	63.0	23,800	66.5	24,100	69.0	25,200	71.5	23,700
55	56.0	21,400	60.0	22,000	63.5	22,300	67.0	23,500	69.5	23,300
60	52.0	19,900	57.0	20,400	61.0	20,800	64.0	20,500	67.0	20,200
65	48.0	18,600	53.5	18,700	57.5	18,400	61.5	18,000	64.5	17,700
70	43.5	16,700	50.0	16,600	54.5	16,300	58.5	15,900	62.0	15,600
75	39.0	14,900	46.0	14,800	51.0	14,500	55.5	14,100	59.0	13,800
80	33.5	13,400	42.0	13,300	47.5	12,900	52.5	12,600	56.5	12,400
85	27.0	12,100	37.5	12,000	44.0	11,700	49.5	11,400	53.5	11,100
90	18.0	10,900	32.0	10,800	40.0	10,800	46.0	10,200	51.0	9,900
95			26.0	9,800	35.5	9,500	42.5	9,200	48.0	8,900
100			17.0	8,800	31.0	8,600	38.5	8,300	44.5	8,000
105					25.0	7,700	34.5	7,400	41.5	7,200
110					18.5	7,000	30.0	6,700	37.5	6,400
115							24.0	6,000	33.5	5,700
120							16.0	5,400	29.0	5,100
125									23.5	4,600
130									16.0	4,100
Min.Bm.	0.0	6,600	0.0	5,500	0.0	4,400	0.0	3,300	0.0	2,400
Ang./Cap.	(93.0)		(103.0)		(113.0)		(123.0)		(133.0)	

*Sample only, refer to s/n capacity charts for full range of capacities.



WITHOUT QUESTION

IRVING EQUIPMENT LIMITED
 1-800-561-CRANE (2726)
WWW.IRVINGEQUIPMENT.COM

LINK-BELT HTC-86100 | MAIN BOOM LIFTING CAPACITIES

Load Radius (ft)	Rated Lifting Capacities In Pounds											
	38.0 ft		50.0 ft		60.0 ft		70.0 ft		80.0 ft		90.0 ft	
	\angle	360°	\angle	360°	\angle	360°	\angle	360°	\angle	360°	\angle	360°
9	69.5	165,800										
10	68.0	156,500	74.0	80,500	77.0	58,000	79.5	55,900				
12	64.5	137,100	71.5	75,100	75.0	53,800	77.5	52,300	79.5	41,900		
15	59.0	108,800	67.5	68,100	72.0	48,400	75.0	47,500	77.5	41,900	79.0	33,500
20	49.5	79,500	61.0	59,100	67.0	41,400	71.0	41,100	74.0	41,900	76.0	33,500
25	37.5	61,500	54.0	52,200	61.5	36,100	66.5	36,300	70.0	37,900	73.0	33,500
30	18.5	47,200	46.0	46,900	55.5	32,000	61.5	32,400	66.0	34,000	69.5	31,400
35			37.0	39,600	49.0	28,800	56.5	29,200	62.0	30,400	66.0	28,200
40			24.0	31,500	42.0	26,100	51.5	26,800	58.0	27,800	62.5	25,500
45					33.5	23,900	45.5	24,400	53.5	25,100	58.5	23,300
50					22.0	22,200	39.0	22,600	48.5	23,100	54.5	21,400
55							31.5	20,300	43.0	20,800	50.5	19,800
60							20.5	17,600	37.0	18,000	46.0	18,200
65									29.5	15,700	40.5	16,000
70									19.5	13,900	35.0	14,100
75											28.0	12,500
80											18.5	11,100
Min. Bm.	0.0	31,900	0.0	18,200	0.0	13,000	0.0	10,800	0.0	9,200	0.0	7,900
Ang./Cap.	(31.0)		(43.0)		(53.0)		(63.0)		(73.0)		(83.0)	

Load Radius (ft)	100.0 ft		110.0 ft		120.0 ft		130.0 ft		140.0 ft	
	\angle	360°	\angle	360°	\angle	360°	\angle	360°	\angle	360°
20	77.5	32,200	79.0	27,200						
25	75.0	32,200	76.5	27,200	78.0	28,100	79.5	26,900		
30	72.0	32,200	74.0	27,200	76.0	28,100	77.5	26,500	78.5	24,400
35	69.0	29,700	71.5	27,200	73.5	28,100	75.5	26,300	77.0	24,100
40	66.0	27,100	69.0	27,200	71.5	28,100	73.5	26,100	75.0	24,000
45	62.5	24,900	66.0	25,900	69.0	26,200	71.5	25,900	73.5	23,800
50	59.5	23,000	63.0	23,800	66.5	23,800	69.0	23,400	71.5	23,000
55	55.5	20,800	60.0	20,700	63.5	20,400	66.0	20,000	69.0	19,800
60	52.0	18,100	56.5	18,000	60.5	17,600	63.5	17,200	66.5	16,900
65	47.5	15,800	53.0	15,700	57.0	15,400	60.5	15,000	64.0	14,700
70	43.5	14,000	49.5	13,900	54.0	13,500	58.0	13,100	61.0	12,800
75	38.5	12,400	45.5	12,300	51.0	12,000	55.0	11,600	58.5	11,300
80	33.0	11,000	41.5	10,900	47.5	10,600	52.0	10,200	56.0	9,900
85	26.5	9,800	37.0	9,700	43.5	9,400	49.0	9,000	53.0	8,700
90	17.5	8,700	31.5	8,600	39.5	8,300	45.5	8,000	50.0	7,600
95			25.5	7,700	35.5	7,400	42.0	7,000	47.0	6,700
100			17.0	6,900	30.5	6,600	38.0	6,200	44.0	5,900
105					24.5	5,800	34.0	5,500	40.5	5,200
110					16.0	5,200	29.5	4,800	37.0	4,500
115							23.5	4,300	33.0	3,900
120							15.5	3,700	28.5	3,400
125									23.0	2,900
130									15.5	2,500
Min. Bm.	0.0	6,600	0.0	5,500	0.0	4,400	0.0	3,300	0.0	2,300
Ang./Cap.	(93.0)		(103.0)		(113.0)		(123.0)		(133.0)	

() Radius For Minimum Boom Angle Capacities (Shown In Parenthesis) Are In Feet.

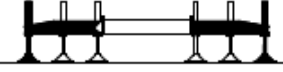
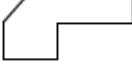

*Sample only, refer to s/n capacity charts for full range of capacities.



**WITHOUT
QUESTION**

IRVING EQUIPMENT LIMITED
1-800-561-CRANE (2726)
WWW.IRVINGEQUIPMENT.COM

LINK-BELT HTC-86100 | MAIN BOOM LIFTING CAPACITIES

Rated Lifting Capacities In Pounds		 Full						 0 lb						
		38.0 ft		50.0 ft		60.0 ft		70.0 ft		80.0 ft		90.0 ft		
Load Radius (ft)		\angle °	360°	\angle °	360°	\angle °	360°	\angle °	360°	\angle °	360°	\angle °	360°	
9		69.5	157,300											
10		68.0	146,700	74.0	80,500	77.0	58,000	79.5	55,900					
12		64.5	122,000	71.5	75,100	75.0	53,800	77.5	52,300	79.5	41,900			
15		59.0	96,500	67.5	68,100	72.0	48,400	75.0	47,500	77.5	41,900	79.0	33,500	
20		49.5	68,400	61.0	59,100	67.0	41,400	71.0	41,100	74.0	41,900	76.0	33,500	
25		37.5	46,200	54.0	50,100	61.5	36,100	66.5	36,300	70.0	37,900	73.0	33,500	
30		18.0	32,000	46.0	35,700	55.5	32,000	61.5	32,400	66.0	34,000	69.5	31,400	
35				36.5	26,800	49.0	28,600	56.5	29,200	62.0	29,800	66.0	28,200	
40				24.0	20,500	42.0	22,100	51.0	22,900	57.5	23,400	62.0	23,600	
45						33.5	17,600	45.5	18,300	53.0	18,800	58.0	19,000	
50						21.5	14,300	38.5	15,000	48.0	15,400	54.0	15,600	
55								31.0	12,500	42.5	12,800	49.5	13,000	
60								20.0	10,400	36.0	10,800	45.0	11,000	
65										29.0	9,200	40.0	9,400	
70										19.0	7,800	34.0	8,000	
75												27.5	6,800	
80												17.5	5,800	
Min.Bm. Ang./Cap.		0.0 (31.0)	29,700	0.0 (43.0)	17,500	0.0 (53.0)	12,600	0.0 (63.0)	9,300	0.0 (73.0)	7,000	0.0 (83.0)	5,300	

Load Radius (ft)	100.0 ft		110.0 ft		120.0 ft		130.0 ft		140.0 ft		
	\angle °	360°	\angle °	360°	\angle °	360°	\angle °	360°	\angle °	360°	
20	77.5	32,200	79.0	27,200							
25	75.0	32,200	76.5	27,200	78.0	28,100	79.5	26,900			
30	72.0	32,200	74.0	27,200	76.0	28,100	77.5	26,500	78.5	24,400	
35	69.0	29,700	71.5	27,200	73.5	28,100	75.5	26,300	77.0	24,100	
40	65.5	23,400	68.5	23,300	71.0	22,900	73.0	22,400	75.0	22,000	
45	62.0	18,800	65.5	18,700	68.0	18,300	70.5	17,900	72.5	17,500	
50	58.5	15,500	62.0	15,300	65.0	15,000	67.5	14,500	70.0	14,200	
55	55.0	12,900	59.0	12,700	62.0	12,500	65.0	12,100	67.5	11,700	
60	51.0	10,900	55.5	10,800	59.0	10,500	62.5	10,100	65.0	9,700	
65	47.0	9,200	52.0	9,100	56.0	8,800	59.5	8,400	62.5	8,100	
70	42.5	7,900	48.5	7,800	53.0	7,400	57.0	7,100	60.0	6,700	
75	38.0	6,700	44.5	6,600	50.0	6,300	54.0	5,900	57.5	5,600	
80	32.5	5,700	40.5	5,600	46.5	5,300	51.0	4,900	54.5	4,600	
85	26.0	4,900	36.0	4,800	42.5	4,500	48.0	4,100	52.0	3,800	
90	17.0	4,100	31.0	4,000	39.0	3,700	44.5	3,400	49.0	3,000	
95			24.5	3,400	34.5	3,100	41.0	2,700	46.0	2,400	
100			16.0	2,800	29.5	2,500	37.5	2,100	43.0	1,800	
105					23.5	2,000	33.0	1,600	39.5	1,300	
110					15.5	1,500	28.5	1,200			
Min.Bm. Ang./Cap.	0.0 (93.0)	3,700	0.0 (103.0)	2,500	0.0 (113.0)	1,300	24.5 (113.3)		36.0 (110.0)		

() Radius For Minimum Boom Angle Capacities (Shown In Parenthesis) Are In Feet.



**WITHOUT
QUESTION**

IRVING EQUIPMENT LIMITED
 1-800-561-CRANE (2726)
WWW.IRVINGEQUIPMENT.COM

LINK-BELT HTC-86100 | JIB LIFTING CAPACITIES

39,500 lb Counterweight – Fully Extended Outriggers – 360° Rotation
 (All Capacities Are Listed In Pounds)

140 ft Main Boom Length 2° Fly Offset					140 ft Main Boom Length 15° Fly Offset				
Radius (ft)	Fly Length (ft)				Radius (ft)	Fly Length (ft)			
	35	58	74	90		35	58	74	90
35	12,100				35				
40	12,100				40				
45	12,100	8,500			45	11,500			
50	12,100	8,400	6,600		50	11,400			
55	12,100	8,300	6,600	5,200	55	11,200			
60	12,100	8,100	6,600	5,200	60	11,000	7,200		
65	11,900	8,000	6,600	5,200	65	10,800	7,000	6,300	
70	11,700	7,800	6,600	5,200	70	10,600	6,800	6,000	4,800
75	11,500	7,700	6,600	5,100	75	10,400	6,700	5,700	4,500
80	11,300	7,500	6,400	4,800	80	10,200	6,500	5,400	4,200
85	11,000	7,300	6,000	4,500	85	10,000	6,300	5,100	4,000
90	10,500	7,100	5,700	4,200	90	9,700	6,200	4,900	3,700
95	10,100	6,900	5,400	4,000	95	9,400	6,000	4,600	3,500
100	9,700	6,700	5,100	3,700	100	9,000	5,900	4,400	3,300
105	9,300	6,500	4,900	3,500	105	8,700	5,700	4,200	3,100
110	8,900	6,300	4,700	3,300	110	8,400	5,600	4,100	3,000
115	8,500	6,000	4,500	3,200	115	8,100	5,500	3,900	2,800
120	7,800	5,800	4,300	3,000	120	7,900	5,300	3,700	2,700
125	7,100	5,600	4,100	2,800	125	7,400	5,100	3,600	2,500
130	6,500	5,300	3,900	2,700	130	6,800	4,900	3,500	2,400
135	6,000	5,200	3,800	2,500	135	6,200	4,700	3,300	2,300
140	5,500	5,000	3,600	2,400	140	5,700	4,600	3,200	2,200
145	5,000	4,800	3,500	2,300	145	5,200	4,400	3,100	2,100
150	4,500	4,700	3,400	2,200	150	4,700	4,300	3,000	2,000
155	4,100	4,500	3,200	2,100	155	4,300	4,200	2,900	1,900
160	3,700	4,100	3,100	2,000	160	3,800	4,100	2,900	1,800
165	3,400	3,700	3,100	1,900	165	3,400	4,000	2,800	1,700
170		3,400	3,000	1,800	170		3,600	2,700	1,600
175		3,000	2,800	1,800	175		3,200	2,700	1,600
180		2,700	2,500	1,700	180		2,900	2,600	1,500
185		2,400	2,200	1,600	185		2,500	2,400	1,500
190			1,900	1,600	190			2,100	1,400
195			1,700	1,500	195			1,800	1,400
200			1,400	1,300	200			1,500	1,400
205				1,100	205				1,300
210				900	210				1,000
					215				800



**WITHOUT
QUESTION**

IRVING EQUIPMENT LIMITED
 1-800-561-CRANE (2726)
WWW.IRVINGEQUIPMENT.COM

LINK-BELT HTC-86100 | JIB LIFTING CAPACITIES

39,500 lb Counterweight – Fully Extended Outriggers – 360° Rotation
 (All Capacities Are Listed In Pounds)

140 ft Main Boom Length 30° Fly Offset					140 ft Main Boom Length 45° Fly Offset				
Radius (ft)	Fly Length (ft)				Radius (ft)	Fly Length (ft)			
	35	58	74	90		35	58	74	90
35					35				
40					40				
45					45				
50					50				
55	10,000				55				
60	9,800				60				
65	9,700				65	8,800			
70	9,500				70	8,800			
75	9,400	5,700	4,600		75	8,700			
80	9,200	5,600	4,400	3,600	80	8,600			
85	9,100	5,500	4,200	3,400	85	8,600	4,900	3,700	
90	9,000	5,400	4,100	3,200	90	8,500	4,900	3,500	2,900
95	8,800	5,300	3,900	3,000	95	8,400	4,800	3,400	2,700
100	8,500	5,200	3,700	2,900	100	8,200	4,800	3,300	2,600
105	8,200	5,100	3,600	2,700	105	8,000	4,700	3,200	2,400
110	8,000	5,000	3,500	2,600	110	7,800	4,700	3,100	2,300
115	7,700	4,900	3,300	2,400	115	7,600	4,700	3,000	2,200
120	7,500	4,800	3,200	2,300	120	7,400	4,600	2,900	2,100
125	7,300	4,700	3,100	2,200	125	7,200	4,500	2,800	2,000
130	7,000	4,500	3,000	2,100	130	7,100	4,400	2,700	1,900
135	6,400	4,400	2,900	2,000	135	6,400	4,300	2,700	1,800
140	5,800	4,300	2,800	1,900	140		4,200	2,600	1,800
145	5,300	4,200	2,800	1,800	145		4,100	2,600	1,700
150	4,800	4,100	2,700	1,700	150		4,000	2,500	1,600
155	4,300	4,000	2,600	1,700	155		4,000	2,500	1,600
160		3,900	2,600	1,600	160		4,000	2,500	1,500
165		3,900	2,500	1,500	165		4,000	2,500	1,500
170		3,700	2,500	1,500	170			2,500	1,400
175		3,300	2,500	1,400	175			2,500	1,400
180		2,900	2,500	1,400	180				1,400
185			2,500	1,400	185				1,400
190			2,200	1,300	190				1,400
195			1,900	1,300					
200				1,300					
205				1,300					
210				1,100					



**WITHOUT
QUESTION**

IRVING EQUIPMENT LIMITED
1-800-561-CRANE (2726)
WWW.IRVINGEQUIPMENT.COM



- ✓ **FULL-SERVICE PROVIDER FOR CRANE RENTAL, RIGGING, AND LIFT PLANNING.**
- ✓ **DAILY, WEEKLY, MONTHLY RATES AVAILABLE**
- ✓ **DRY-LEASE AND LONG-TERM RENTALS**
- ✓ **OUR PURPOSE IS TO LEAVE 'NO ROOM FOR DOUBT'!**